



UltraX HD 19" 1U Enclosure

4 x Module Cassette, Sliding Type



Description

T&S UltraX is a family of high-density fiber management products. Every single member is compatible with UltraX platform, which offers a variety of flexible collocation for different needs in data centers. Based on UltraX platform, data center expansion on distribution area becomes simple and easy by merely replacing adapter and adapters panels.

The 1U enclosure is a rack mountable interconnect point specifically designed to manage dense fiber applications. The enclosure features non-one-piece top cover and two 3-stage sliding rails with unique and reliable design, enabling easier and faster installation and maintenance. UltraX provides enhanced management of density up to 144 fibers.

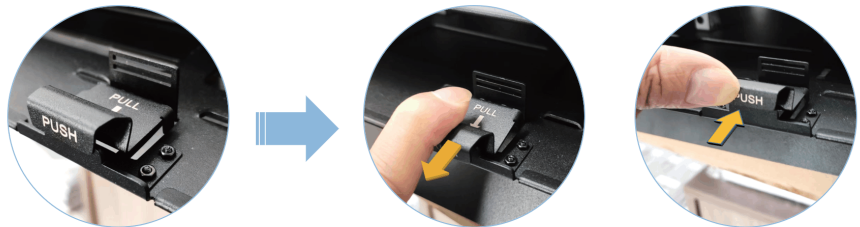
Features

- Cold-rolled sheet
- Textured black powder coat finish
- Universal 19" rack and compatibility
- Detachable top cover
- Premium 3-stage sliding rail

Applications

- Data Centers
- Enterprise Network
- Telecommunications Cabinet
- Central Office

Lock-unlock Mechanism



Press and pull to unlock

Push back to lock

Specifications

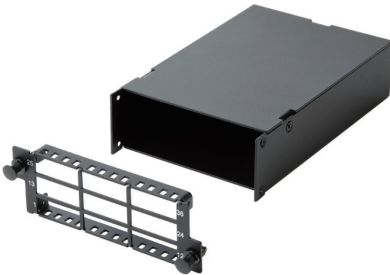
Rack Unit	1U	Loading Capacity	4 Cassettes
Material (Body)	Cold-rolled Sheet	Material (Top Cover)	Aluminum
Surface	Black Powder Coat Finish	Installation	Rack-mount
Dimension (HWD)	44*483*435(mm)	Weight	6.0Kg

Remark: Full loading capacity can be found at "Ordering Information" on page 4 and page 5.

Ordering Information

Part Number	Description
UTS-E1U	UltraX Fiber Management Enclosure, 19" 1U, Sliding Type, Black, Unloaded

Module Cassettes and Adapter Plates for UltraX Series Enclosures



T&S UltraX HD Fiber Management Optical Module Cassette has the primary function of breaking out multi-fiber connectors to simplex or duplex connectors for connection to adjacent network elements, which streamlines the deployment of optical network infrastructure greatly.

The modules feature a durable powder coat finish, and are compatible with T&S UltraX 19" rack-mounted ODF platform. All modules are clearly labeled with a silk-screened number reference to ensure proper polarity is maintained in the network.

Optical Performance

LC - MPO/MTP*

Parameter	SM	SM	MM (OM3)	MM (OM4)
	LC/UPC- MPO/MTP*	LC/APC- MPO/MTP*	LC/PC- MPO/MTP*	LC/PC- MPO/MTP*
Max Insertion Loss (dB)	0.6	0.6	0.6	0.6
Typical IL (dB)	0.35	0.35	0.30	0.30
Min Return Loss (dB)	55	60	20	20

SC - MPO/MTP*

Parameter	SM	SM	MM (OM3)	MM (OM4)
	SC/UPC- MPO/MTP*	SC/APC- MPO/MTP*	SC/PC- MPO/MTP*	SC/PC- MPO/MTP*
Max Insertion Loss (dB)	0.6	0.6	0.6	0.6
Typical IL (dB)	0.35	0.35	0.30	0.30
Min Return Loss (dB)	55	60	20	20

MDC - MPO/MTP*

Parameter	SM	SM	MM (OM3)	MM (OM4)
	MDC/UPC- MPO/MTP*	MDC/APC- MPO/MTP*	MDC/PC- MPO/MTP*	MDC/PC- MPO/MTP*
Max Insertion Loss (dB)	0.6	0.6	0.6	0.6
Typical IL (dB)	0.35	0.35	0.30	0.30
Min Return Loss (dB)	55	60	20	20

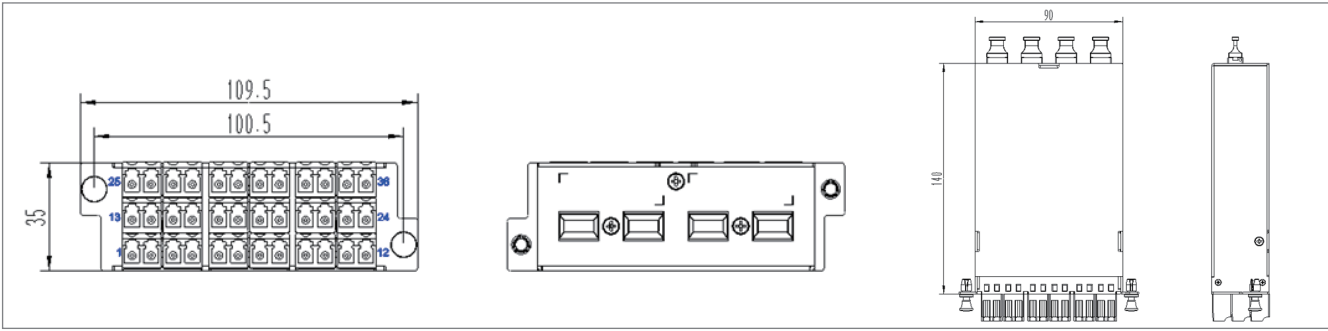
SN - MPO/MTP*

Parameter	SM	SM	MM (OM3)	MM (OM4)
	SN/UPC- MPO/MTP*	SN/APC- MPO/MTP*	SN/PC- MPO/MTP*	SN/PC- MPO/MTP*
Max Insertion Loss (dB)	0.6	0.6	0.6	0.6
Typical IL (dB)	0.35	0.35	0.30	0.30
Min Return Loss (dB)	55	60	20	20

Remark: This data sheet indicates optical performance of module cassettes loaded with T&S cable cords. Both unloaded and loaded cassettes are available at T&S.

General Information

Module Body	Rear Adapter	Adapter Color (Front)	Adapter Color (Rear)	MPO/MTP* Adapter
Aluminum	MPO/MTP*	Blue/Green/Aqua/Magenta	Black/Gray/Yellow	Key up-key down
Mating Durability	Polarity	Dimension (HWD)	Qualification	Application
≥500 times	Customized	35*109.5*140 (mm)	RoHS	Match for UltraX Enclosures
Material (Body)	Material (Adpate Plate)	Weight (Cold-rolled Sheet)	Weight (Aluminum)	
Cold-rolled Sheet or Aluminum	Cold-rolled Sheet	0.42 Kg	0.19 Kg	



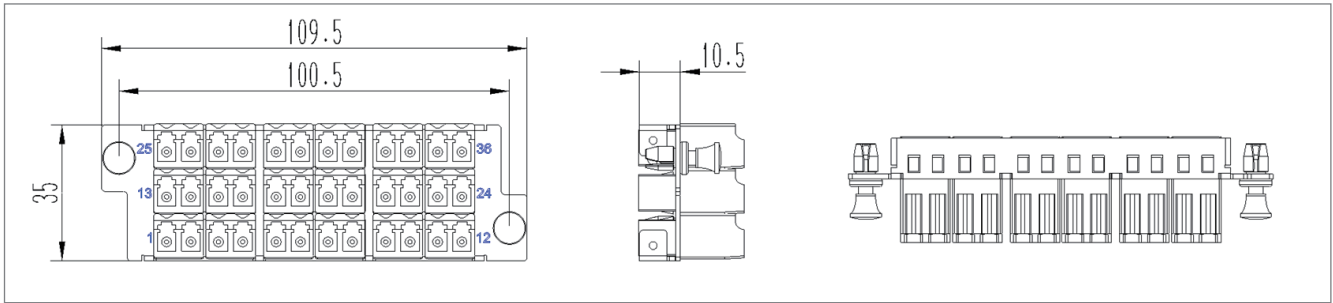
Module Configuration

	Module	4MPO-36LC		Module	4MPO-24LC
	Capacity	36F		Capacity	24F
	Front Adapter	18xLC (Duplex)		Front Adapter	12xLC (Duplex)
	Rear Adapter	MPO/MTP*		Rear Adapter	MPO/MTP*
	Part Number*	UT0-M4M36LD0		Part Number*	UT0-M4M24LD0
	Module	4MPO-12LC		Module	4MPO-12SC
	Capacity	12F		Capacity	12F
	Front Adapter	6xLC (Duplex)		Front Adapter	6xSC (Duplex)
	Rear Adapter	MPO/MTP*		Rear Adapter	MPO/MTP*
	Part Number*	UT0-M4M12LD0		Part Number*	UT0-M4M12SD0
	Module	4MPO-48MDC		Module	4MPO-64MDC
	Capacity	48F		Capacity	64F
	Front Adapter	18xMDC (Triplet)		Front Adapter	18xMDC (Quad)
	Rear Adapter	MPO/MTP*		Rear Adapter	MPO/MTP*
	Part Number*	UT0-M4M48DT0		Part Number*	UT0-M4M64DQ0
	Module	4MPO-64SN		Plug	MPO/MTP*
	Capacity	64F		Part Number	AC0-PM0GG
	Front Adapter	8xSN (Quad)			
	Rear Adapter	MPO/MTP*			
	Part Number*	UT0-M4M64NQ0			

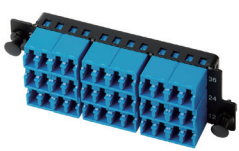
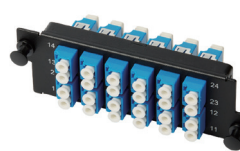


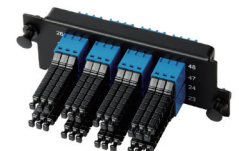
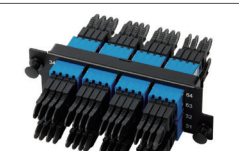
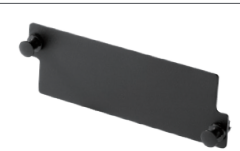
* Remark: The part number refers to a module cassette without adapters.

Ordering Information

Category	Part Number	Description	Capacity (Full Loading in UltraX-1U)
MPO-LC	UT0-M4M36LD0	4MPO-36LC (Duplex) Module Cassette, Black, without adapters	144F
	UT0-M4M24LD0	4MPO-24LC (Duplex) Module Cassette, Black, without adapters	96F
	UT0-M4M12LD0	4MPO-12LC (Duplex) Module Cassette, Black, without adapters	48F
MPO-SC	UT0-M4M12SD0	4MPO-12SC (Duplex) Module Cassette, Black, without adapters	48F
MPO-MDC	UT0-M4M48DT0	4MPO-48MDC Module Cassette, Black, without adapters	192F
	UT0-M4M64DQ0	4MPO-64MDC Module Cassette, Black, without adapters	256F
MPO-SN	UT0-M4M64NQ0	4MPO-64SN Module Cassette, Black, without adapters	256F
-	AC0-PM0GG	MPO/MTP* Adapter Plug, Black	N/A



Adapter Plate Configuration

	Plate	36 LC		Plate	24 LC
	Adapter	18xLC (duplex)		Adapter	12xLC (duplex)
	Part Number*	UT0-P36LD0		Part Number*	UT0-P24LD0
	Plate	12 LC		Plate	12 SC
	Adapter	6xLC (duplex)		Adapter	6xSC (duplex)
	Part Number*	UT0-P12LD0		Part Number	UT0-P12SD0
	Plate	48 MDC		Plate	64 MDC
	Adapter	8xMDC (Triple)		Adapter	8xMDC (Quad)
	Part Number*	UT0-P48DT0		Part Number*	UT0-P64DQ0
	Plate	64SN		Plate	Blank
	Adapter	8xSN (Quad)		Adapter	-
	Part Number*	UT0-P64NQ0		Part Number	AC1-B00UT

* Remark: The part number refers to an adapter plate without adapters.

Ordering Information

Catagory	Part Number	Description	Capacity (Full Loading in UltraX-1U)
LC	UT0-P36LD0	36LC (Duplex) Adapter Plate, Black, without adapters	144F
	UT0-P24LD0	24LC (Duplex) Adapter Plate, Black, without adapters	96F
	UT0-P12LD0	12LC (Duplex) Adapter Plate, Black, without adapters	48F
SC	UT0-P12SD0	12SC (Duplex) Adapter Plate, Black, without adapters	48F
MDC	UT0-P48DT0	48MDC Adapter Plate, Black, without adapters	192F
	UT0-P64DQ0	64MDC Adapter Plate, Black, without adapters	256F
SN	UT0-P64NQ0	64SN Adapter Plate, Black, without adapters	256F
-	AC1-B00UT	Blank Plate, Black	-