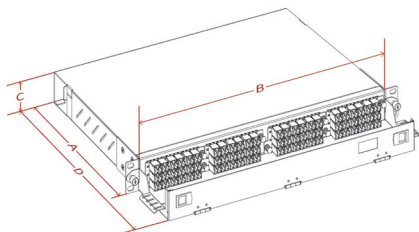




(with four module cassettes)



(Detachable front bracket)



SmartX High Density Fiber Management 19" 1U Patch Panel (Module Cassettes)

144-Fiber Rack-Mount Fiber Patch Panel

Description

T&S SmartX is a family of high-density fiber management products. Every single member is compatible with SmartX platform, which offers a variety of flexible collocation for different needs in data centers. Based on SmartX platform, data center expansion on distribution area becomes simple and easy by merely replacing adapter and adapters plates.

SmartX 1U patch panel is a rack mountable interconnect point specifically designed to manage dense fiber applications. This panel offers enhanced management of densities up to 144 fibers using four MTP-LC module cassettes. The detachable adapter plate on module cassette can be installed separately and used along with fusion splicing units. The detachable front cabling bracket is designed with reliable hinge structure for friendly future maintenance.

Features

- Cold-rolled sheet
- Textured black powder coat finish
- Universal 19" rack and compatibility
- Detachable module cassette adapter plate
- Detachable top cover and front supporting bracket

Applications

- Data Centers
- Enterprise Network
- Telecommunications Cabinet
- Central Offices

Specifications

Depth 1 (mm) A	Width (mm) B	Height (mm) C	Depth 2 (mm) D	Rack Units	Capacity	Unloaded Weight (Kg)
271	436	44	356	1	144F (LC)	4

Ordering Information

PN	Description
SmartXF-1U	SmartX Fiber Management Patch Panel, 19" 1U, Black, empty



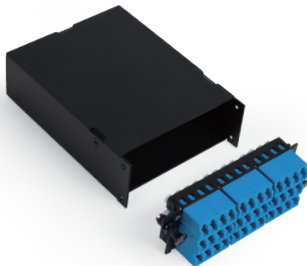
(Front View)



(Rear View)



(Blind Plug)



(Detachable Adapter Plate)

SmartX High Density Fiber Management 3MPO-36LC Module Cassette

Compatible with SmartX 19" Rack-mounted ODF platforms

Description

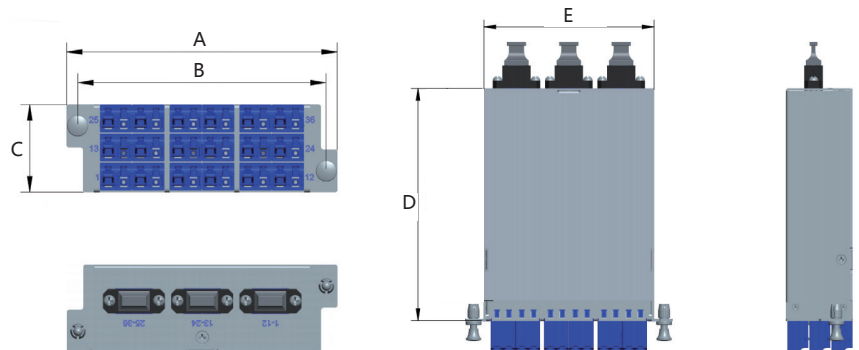
T&S' HD Fiber Management Optical Module Cassette product line is a family of preterminated fanout modules that streamline the deployment of optical network infrastructure. The primary function of these products is to break out multi-fiber connectors to simplex or duplex connectors for connection to adjacent network elements.

T&S SmartX HD Fiber Management Optical Module Cassette has the primary function of breaking out multi-fiber connectors to simplex or duplex connectors for connection to adjacent network elements, which streamlines the deployment of optical network infrastructure greatly.

The modules feature a durable powder coat finish, and are compatible with T&S SmartX 19" Rack-mounted ODF platform. All modules are clearly labeled with a silk-screened number reference to ensure proper polarity is maintained in the network.

Specifications

Width (mm) A	Width (mm) B	Height (mm) C	Depth (mm) D	Width (mm) E	Capacity (Fibers Count)		
					LC	SC	MDC/SN/CS
109.5	100.5	35	122	90	36	18	108



Ordering Information

PN	Description
SmartX-MC3M36L	SmartX 3MTP-36LC Module Cassette, Black, Cold-rolled, Empty