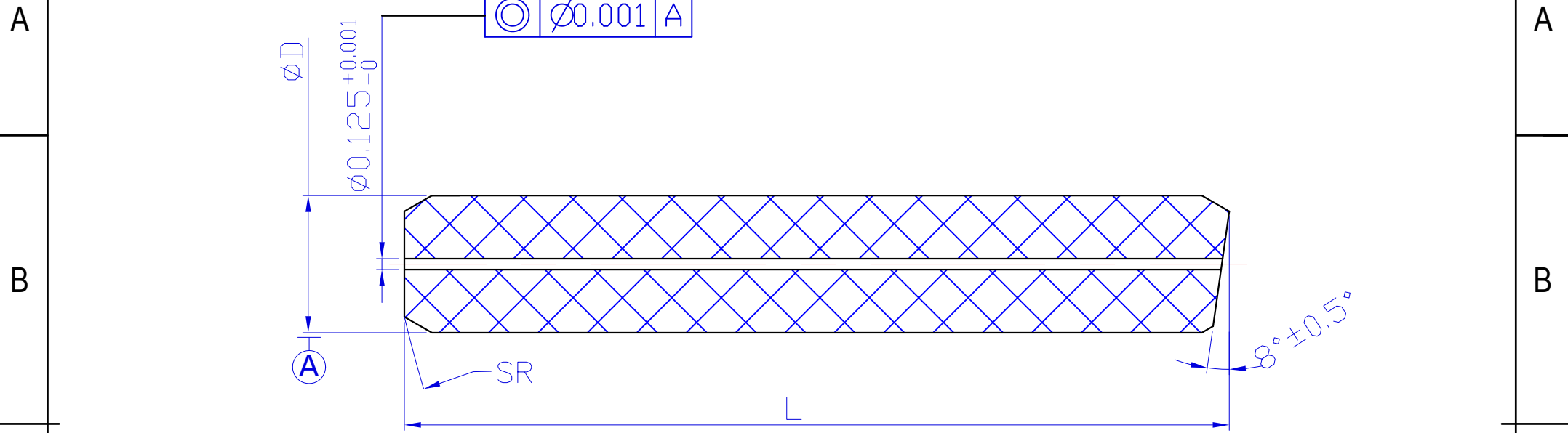


1 2 3 4 5 6



NOTE:

1. Material: Zirconia.
2. Dimensions are in millimeters.
3. Tolerances: .xx ±0.05.
4. Unless noted otherwise, remove burrs & sharp edges.
5. Interpret drawing per ASME Y14.5M-1994
6. Sampling of circled dimensions and general requirements.
7. Product must be Rohs complaint.

型 号	Part No.	SC SM Stub	LC SM Stub
外 径	Outside Diameter D(mm)	Ø2.4990±0.0005	Ø1.2490±0.0005
内 径	Inner Diameter d(mm)	Ø0.1250 ^{+0.001} ₀	
曲率半径	Curve Radiu SR(mm)	SR20 ⁺⁵ ₋₁₀	SR20 ⁺⁵ ₋₁₃
同 芯 度	Concentricity C(mm)	≤0.001	
长 度	Length L(mm)	5~14.5	

Title	Fiber Stub			Material	ZrO2	Unit	mm
Dwg No.	Fiber Stub			Treatment		Scale	10:1
Drawn	Yixue.Gan	Date	2020.09.28			Ver.	1.0
Checked	Andrew.li	Date	2020.09.28				
Approved		Date					

△			
△			
△			
NO.	DATE	NOTE	SIGN

1 2 3 4 5 6