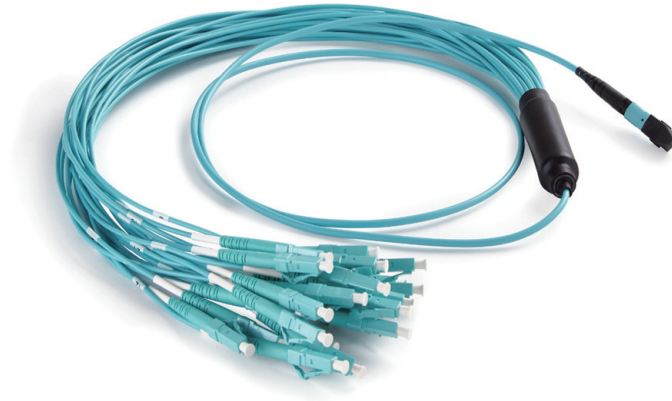


MTP/MPO Harness Cable



Description

MTP®/MPO harness cables are breakout assemblies featuring a single MTP®/MPO connector on one end and multiple single-fiber connectors (LC, SC, FC, etc.) on the other. The multi-fiber trunk is transitioned to individual fibers through a fanout kit, providing protected breakout from high-density backbone links to standard single-fiber interfaces.

These assemblies are widely used to distribute high-fiber-count trunk connections to patch panels, equipment ports, or rack-level fiber management systems. Various cable types, fiber counts, and connector combinations are available to meet different deployment requirements.

Features

- MPO/MTP® to single-fiber connector breakout design
- Precision fanout construction for reliable fiber protection
- Available with PC, UPC, or APC polished connectors
- 100% factory terminated and performance tested
- Pre-terminated assemblies simplify installation and reduce deployment time
- Optional pulling eye for secure cable installation
- Custom cable lengths and connector configurations available
- RoHS compliant

Applications

- Data Center Interconnect
- High-Density Fiber Management
- Telecommunication Networks and CATV networks
- LAN/WAN Premises

Standards Compliance

- TIA-568.3-D
- TIA-604 Series
- IEC 61754 Series
- IEC 61753-1
- Telcordia GR-326-CORE
- Telcordia GR-1435-CORE
- Telcordia GR-2866-CORE
- RoHS Compliant

General Specification

Constructions		Descriptions						
Fiber Count		8-288 Fibers						
Fiber Mode		Single-mode: G.652/G.657						
		Multimode: OM1/OM2/OM3/OM4						
Cable Jacket Material		Low Smoke Zero Halogen (LSZH)						
		PVC						
Cable Jacket Ratings		Riser (OFNR)						
		Plenum (OFNP)						
Cable Jacket Color		G.652/G.657: Yellow						
		OM1/OM2: Orange						
		OM3: Aqua						
		OM4: Aqua/Magenta						
		Customized						
Polarity		Customized						
MTP®/ MPO	Ferrule	12F/16F/24F/32F/48F						
	Connector Type	MTP®, MPO						
	Connector Brand	US Conec MTP®, Senko MPO, Nissin MPO, Sanwa MPO, FURUKAWA MPO, TASLO MPO						
	Connector Color	Ferrule	SM (APC)	SM (PC)	OM3	OM4	or customized	
		Low Loss	Yellow	Yellow	Aqua	Magenta		
Standard		Green	Blue	Aqua	Magenta			
Boot Color	Green/Black or Customized							
Single-fiber connector		LC, SC, FC etc.						
Pulling Eye		Customized						
Operating Temperature		-10 °C to +60 °C						
Storage Temperature		-40 °C to +85 °C						

Notes:

SM Low Loss option is not available for 32F and 48F MTP/MPO connectors.

Technical Specification

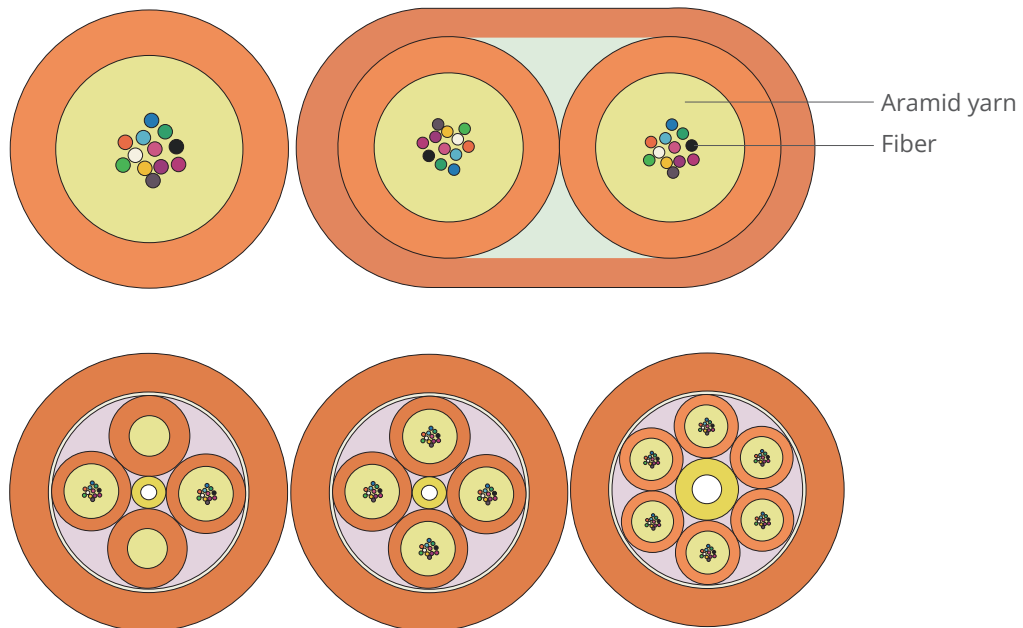
MPO/MTP® Termination

Optical Properties	Single-mode	Multimode
Insertion Loss (dB)	Low Loss ≤ 0.35 (Typical: ≤ 0.25)	Low Loss ≤ 0.35 (Typical: ≤ 0.2)
	Standard Loss ≤ 0.75 (Typical: ≤ 0.4)	Standard Loss ≤ 0.6 (Typical: ≤ 0.35)
Return Loss (dB)	PC ≥ 50 ; APC ≥ 60	PC ≥ 20 ; APC ≥ 40
Wavelength (nm)	1310/1550	850/1300
Durability	≤ 0.3 (dB) Typical change, 50 matings	

Single-fiber connector Termination

Optical Properties	Single-mode	Multimode
Insertion Loss (dB)	UPC ≤ 0.2 ; APC ≤ 0.2	UPC ≤ 0.2
Return Loss (dB)	UPC ≥ 50 ; APC ≥ 60	UPC ≥ 25
Wavelength (nm)	1310/1550	850/1300
Durability	≤ 0.2 (dB) Typical change, 500 matings	

Typical Cable Structure



Pulling Elements

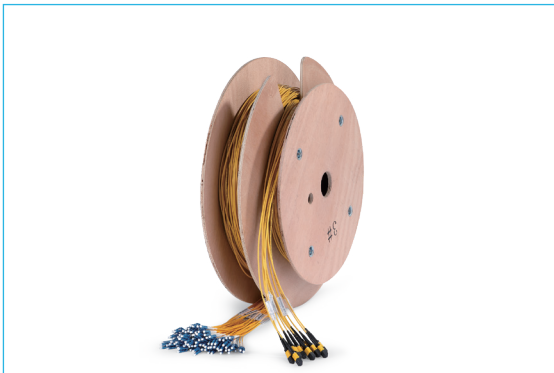


Net-tube pulling eye



Corrugated pipe pulling element

Spool Packaging



Wooden Spool