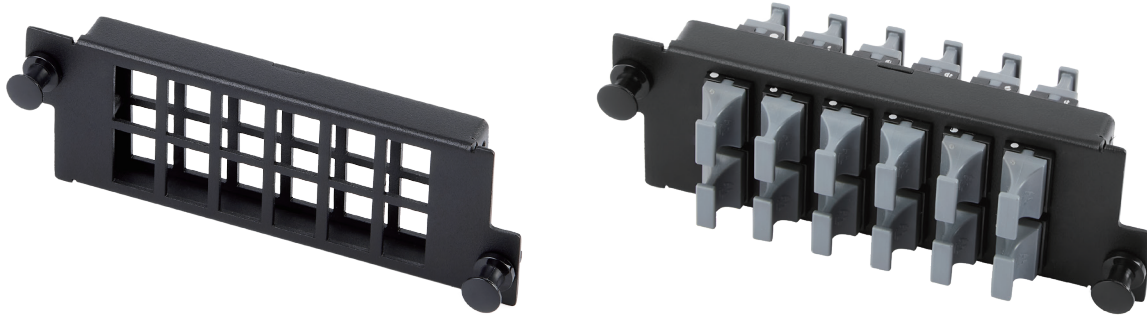


# 12MPO—Metal Adapter Panel

Match for UltraX/Y/N/S/M Series Enclosures



## Description

The MPO adapter panel in the Ultra product family comes pre-loaded with fiber adapters, enabling efficient connections between backbone-to-backbone or backbone-to-horizontal fiber cabling. When paired with Ultra series enclosures, it offers a stable and compact solution that greatly streamlines the deployment of optical network infrastructure.

## General Information

Items	Unit	Details
Material	-	Metal
Adapter	-	MPO
Adapter Color	-	Black/Gray/Yellow or Others
Capacity	-	288F (MPO-24)
Standards	-	RoHS/REACH
Dimension	mm	109.5x35
Weight <sup>①</sup>	g	94
Application	-	Match for UltraX/Y/N/S/M Enclosure

### Notes:

①Weight including adapters.