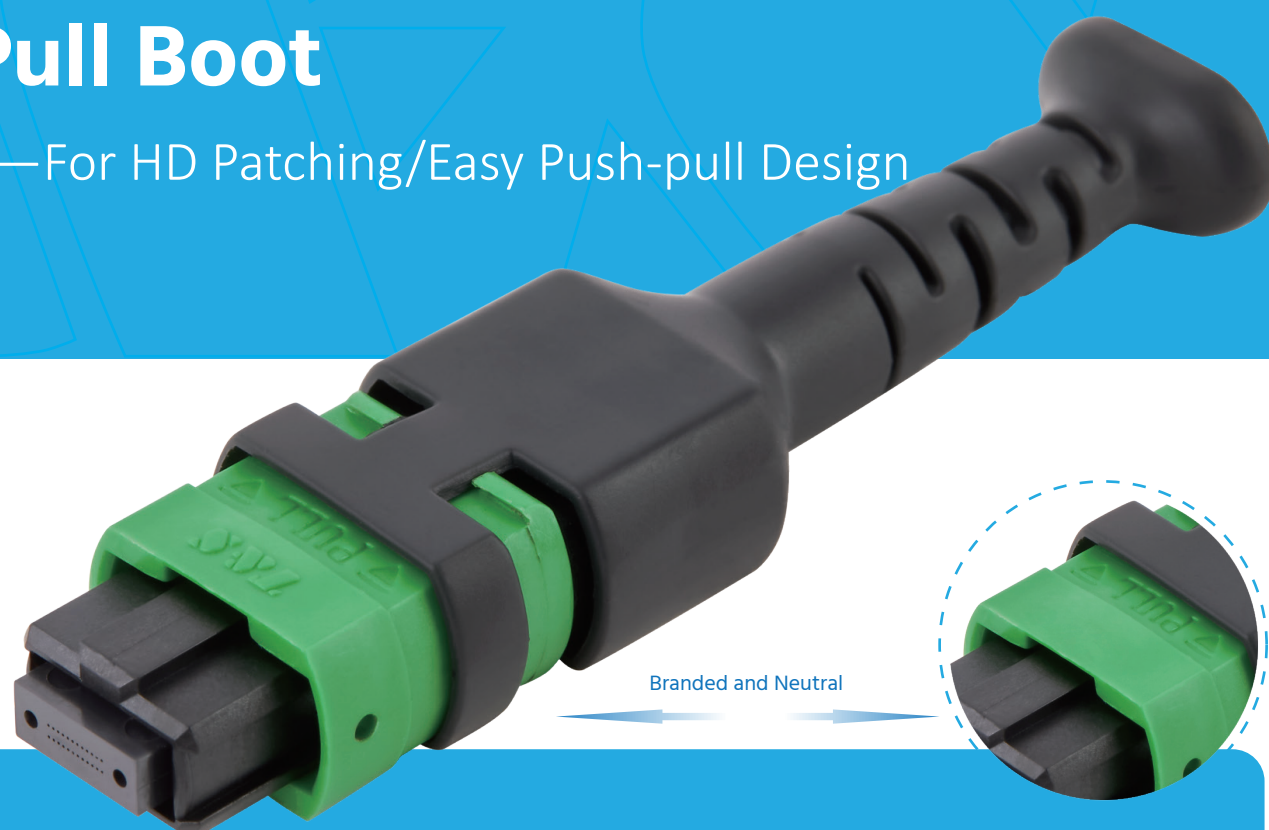
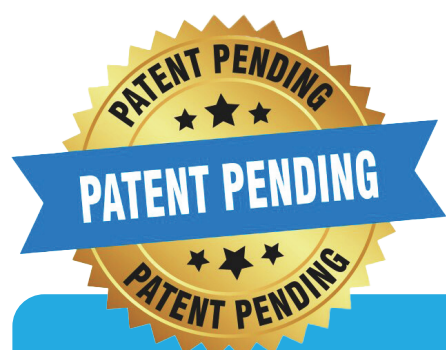


# One-piece **Push-Pull Boot** MPO Connector — For HD Patching/Easy Push-pull Design



Branded and Neutral

T&S's MPO Connector with Push-Pull Boot design is engineered for high-density, space-constrained environments, delivering maximum functional density without requiring pull tabs or field tools. Its compact push-pull boot design enables quick, tool-free insertion and removal, making it ideal for 800G dual-MPO transceivers and streamlining patching operations in dense fiber cabling systems.

Fully compliant with industry-standard MPO interfaces, this connector ensures seamless integration with existing infrastructure. The ergonomic push-pull mechanism enhances accessibility, even in the most congested setups, offering a smoother, more efficient cabling experience.



12F/24F  
Neutral



12F/24F  
T&S Branded



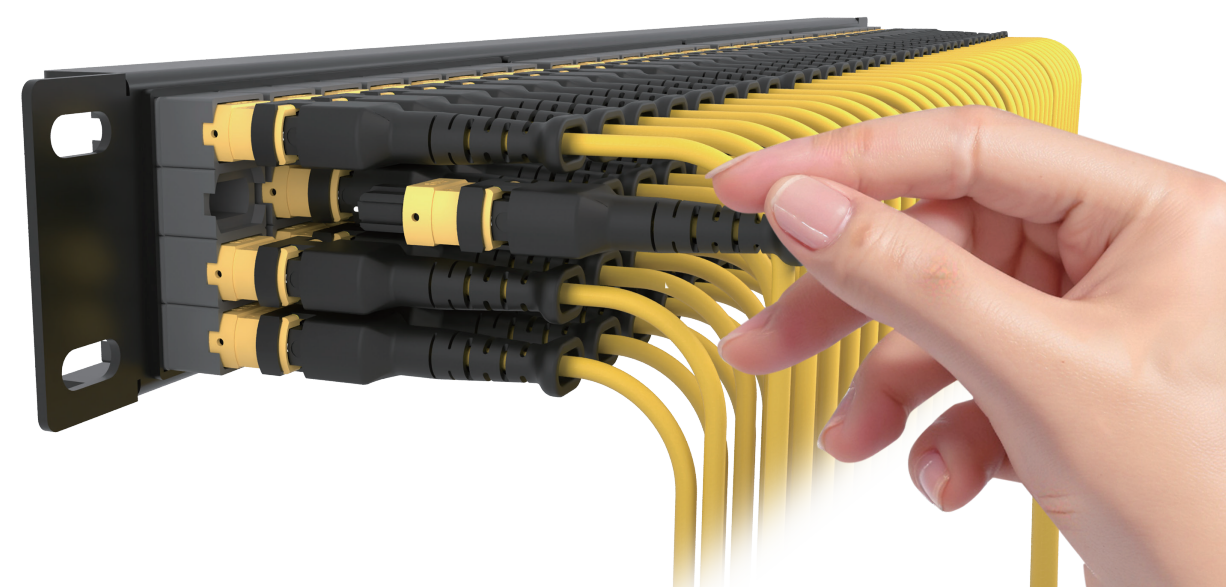
16F/32F  
Neutral



16F/32F  
T&S Branded

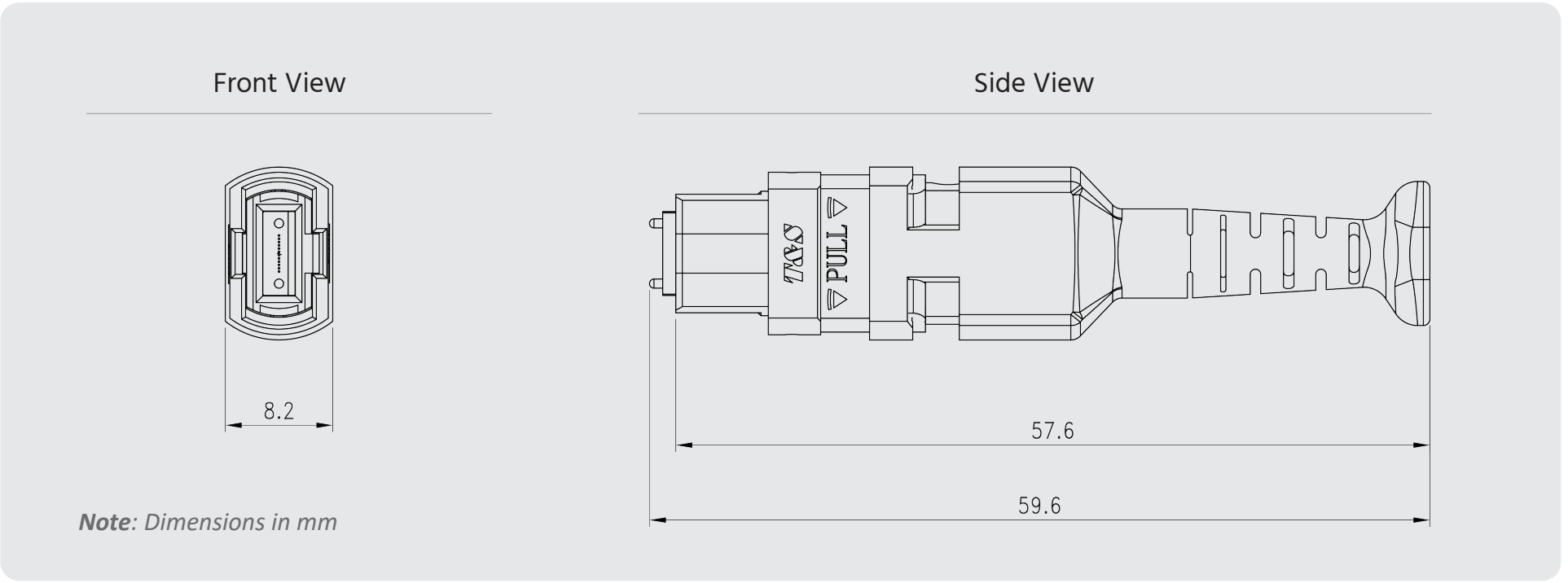
## Features

- Push-pull boot
- Low insertion loss
- High density and compact size
- MPO 12F/24F center key
- MPO 16F/32F offset key
- Compatible with dual MPO interface transceivers
- Compliant with TIA and IEC standards for mechanical load and durability requirements
- Available in multiple housing colors



The integrated design of push-pull rods and boot enhances field usability while optimizing space efficiency, offering significant advantages for high-density panel cabling.

Connector Drawing



Mechanical Performance

	Value
Fiber Count	Up to 32 fibers
Cable	2.0mm to 3.0mm round cable
Durability	50 matings

Optical Performance

		Singlemode	Multimode
Insertion Loss (Low Loss)	Max	0.35dB	0.35dB
Insertion Loss (Low Loss)	Typical	0.25dB	0.20dB
Insertion Loss (Standard)	Max	0.75dB	0.60dB
Insertion Loss (Standard)	Typical	0.40dB	0.35dB
Return Loss	PC	50dB	20dB
Return Loss	APC	60dB	40dB

*Note: Low loss random mating test with master cords.*

Environment Data

	Value
Operating Temperature	-40℃ to +75℃
RoHS Compliance	Yes
REACH Compliance	Yes