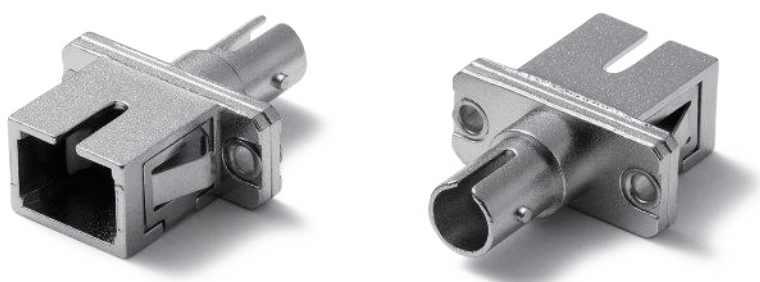


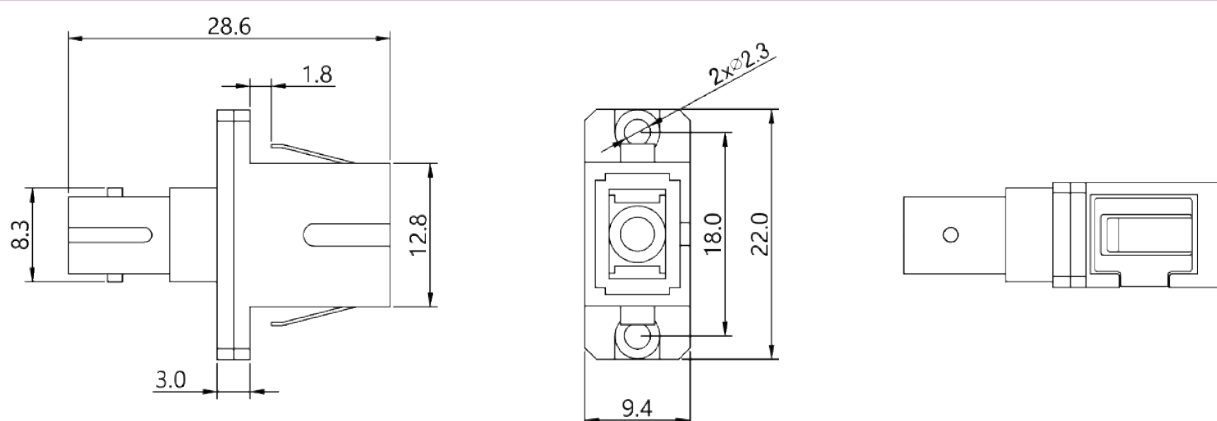
SC-ST

Hybrid Adapter

SC-ST Hybrid Adapter



DIAGRAM



Specifications

Connector	SC, ST	Fiber Mode	9/125
Body Type	Simplex	Gender Type	Female to Female
Housing Material	Metal	Insertion Loss	≤0.2dB
Working Temperature	-25°C ~ +70°C	Durability	≥500 times

Ordering Information

Part Number	Description
AD.SCST.ME-S-ZR-09	Adapter SC/UPC to ST/UPC Hybrid, 9/125, Female to Female, Metal