

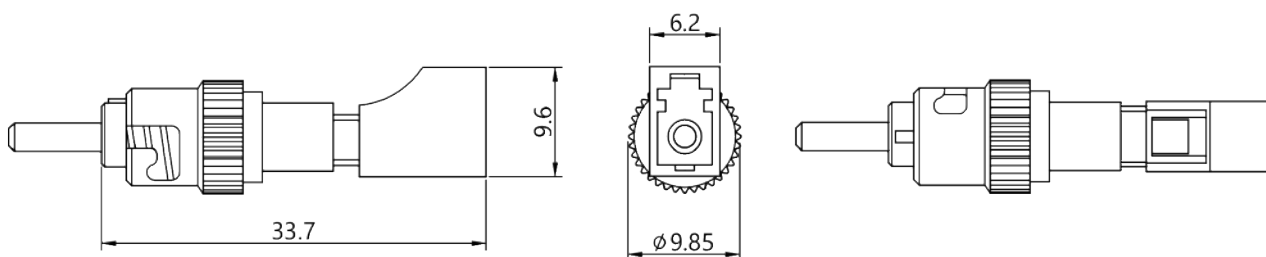
LC-ST

Hybrid Adapter

LC-ST Hybrid Adapter



DIAGRAM



Specifications

Connector	LC, ST	Fiber Mode	9/125, 62.5/125, 50/125
Body Type	Simplex	Gender Type	Female to Male
Housing Material	Plastic, Metal	Insertion Loss	≤0.5dB
Working Temperature	-25°C ~ +70°C	Durability	≥500 times

Ordering Information

Part Number	Description
AD.LCST.BL-S-ZR-02	Adapter LC/UPC to ST/UPC Hybrid, 9/125, Female to Male, Blue & Metal
AD.LCST.BE-S-ZR-03	Adapter LC/UPC to ST/UPC Hybrid, 62.5/125, Female to Male, Beige & Metal
AD.LCST.BE-S-ZR-04	Adapter LC/UPC to ST/UPC Hybrid, 50/125, Female to Male, Beige & Metal