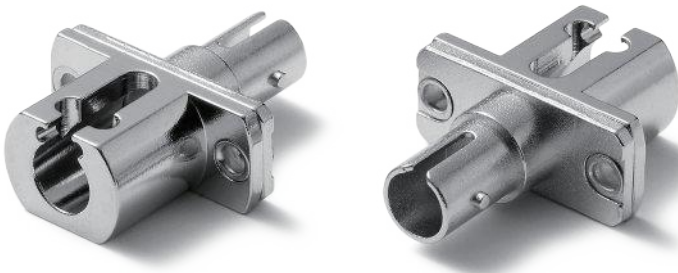


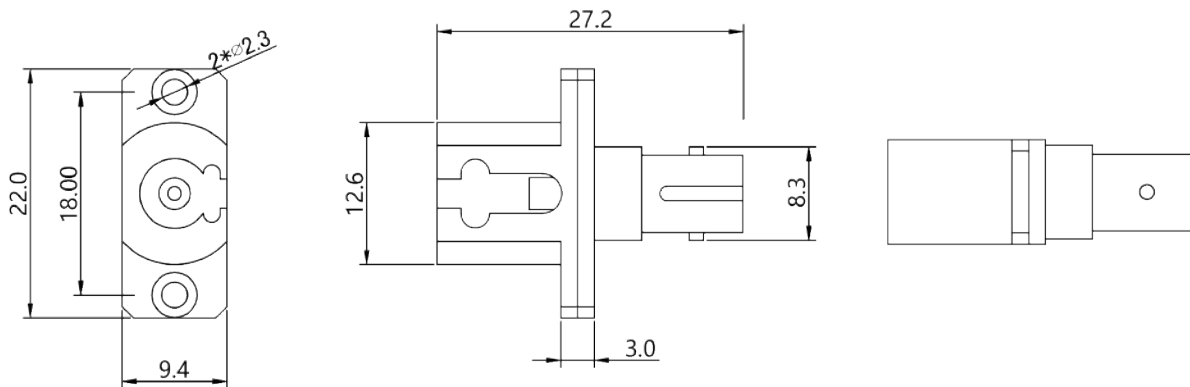
# LC-ST

## Hybrid Adapter

### LC-ST Hybrid Adapter



### DIAGRAM



### Specifications

Connector	LC, ST	Fiber Mode	9/125
Body Type	Simplex	Gender Type	Female to Female
Housing Material	Metal	Insertion Loss	$\leq 0.5\text{dB}$
Working Temperature	$-25^{\circ}\text{C} \sim +70^{\circ}\text{C}$	Durability	$\geq 500$ times

### Ordering Information

Part Number	Description
AD.LCST.ME-S-ZR-03	Adapter LC/UPC to ST/UPC Hybrid, 9/125, Female to Female, Metal