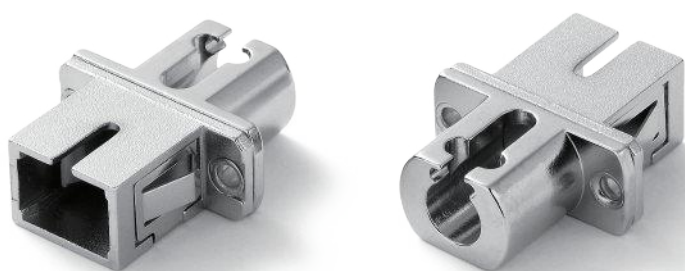


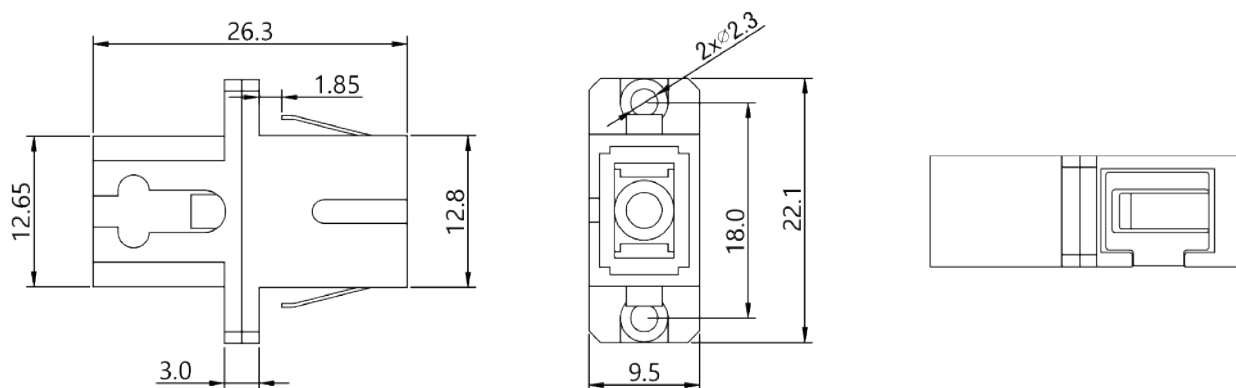
LC-SC

Hybrid Adapter

LC-SC Hybrid Adapter



DIAGRAM



Specifications

Connector	LC, SC	Fiber Mode	9/125
Body Type	Simplex	Gender Type	Female to Female
Housing Material	Metal	Insertion Loss	≤0.5dB
Working Temperature	-25°C ~ +70°C	Durability	≥500 times

Ordering Information

Part Number	Description
AD.LCSC.ME-S-ZR-05	Adapter LC/UPC to SC/UPC Hybrid, 9/125, Female to Female, Metal