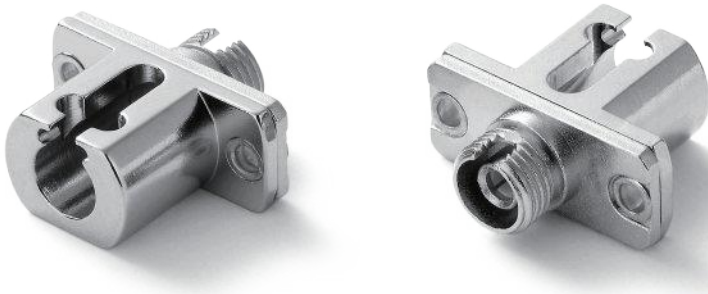


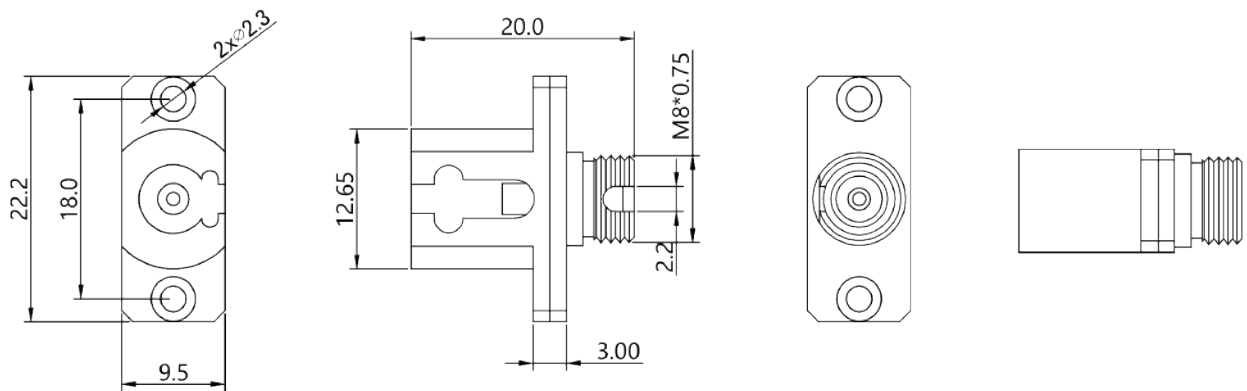
LC-FC

Hybrid Adapter

LC-FC Hybrid Adapter



DIAGRAM



Specifications

Connector	LC, FC	Fiber Mode	9/125
Body Type	Simplex	Gender Type	Female to Female
Housing Material	Metal	Insertion Loss	≤0.5dB
Working Temperature	-25°C ~ +70°C	Durability	≥500 times

Ordering Information

Part Number	Description
AD.FCLC.ME-S-ZR-08	Adapter LC/UPC to FC/UPC Hybrid, 9/125, Female to Female, Metal
AD.FCLC.ME-S-ZR-11	Adapter LC/APC to FC/APC Hybrid, 9/125, Female to Female, Metal