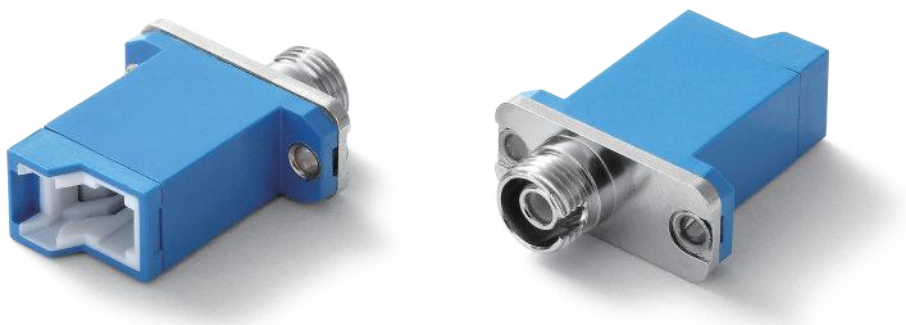


FC-E2000

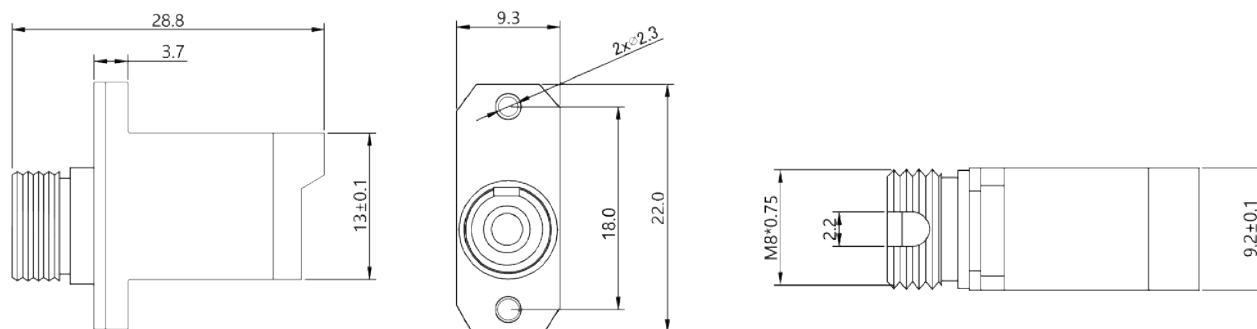
Hybrid Adapter

FC-E2000 Hybrid

FC-E2000 Hybrid Adapter



DIAGRAM



Specifications

Connector	FC, E2000	Fiber Mode	9/125
Body Type	Simplex	Gender Type	Female to Female
Housing Material	Plastic, Metal	Insertion Loss	≤0.2dB
Working Temperature	-25°C ~ +70°C	Durability	≥500 times

Ordering Information

Part Number	Description
AD.E2FC.BL-S-ZR-00	Adapter FC/UPC to E2000/UPC Hybrid, 9/125, Female to Female, Blue & Metal