

Standard Ferrule

T&S offers Ø1.25 mm and Ø2.5 mm ceramic (zirconia) fiber optic ferrules for constructing fiber optic patch cords and a variety of multifiber pre-terminated cable assemblies. Ø1.25 mm LC-sized ferrules are compatible with LC fiber components. The standard Ø2.5 mm SC ferrule size is compatible with FC, SC and ST fiber components. Beyond, there're MU, SMA ferrules types. Ceramic ferrule, compared with other ferrules made from other materials, featured by its low insertion loss required for optical transmission, remarkable strength, small elasticity coefficient, easy control of product characteristics, insensitive to magnetic field and strong resistance to changes in environmental conditions.

T&S standard ceramic ferrules are available with different inner diameters for either single-mode or multimode fibers and Flat/PC/Cone/Step/Pre-angled endfaces as indicated below.

Features

- High precision
- Long-term reliability
- High physical strength
- Excellent durability
- Great anti-aging performance
- Varieties of ferrule: SC/ST/LC/MU/SMA
- Varieties of endface: Flat/PC/Cone/Step/Pre-angled
- Compliant with RoHS and Reach

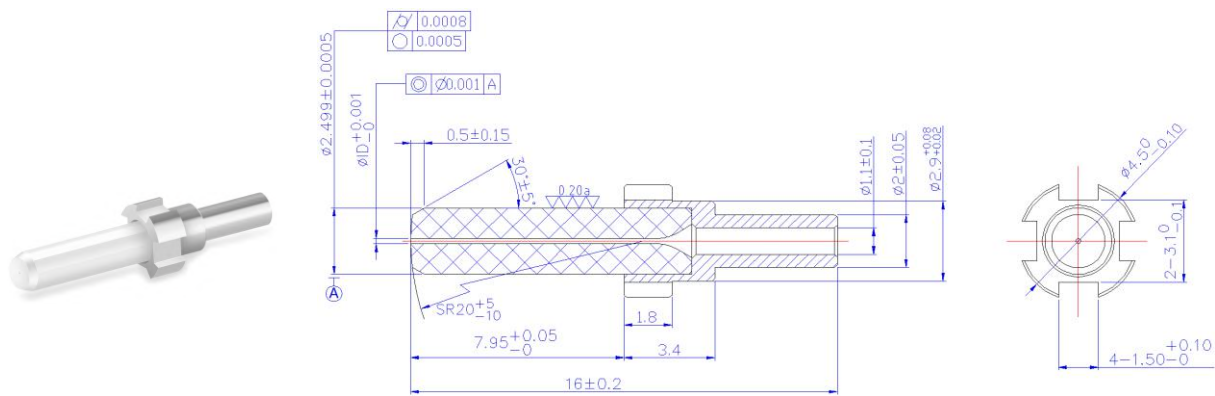
Applications

It is widely used in optical connector, attenuator, splitter and other network transmission nodes. It is a core component of optical communication.

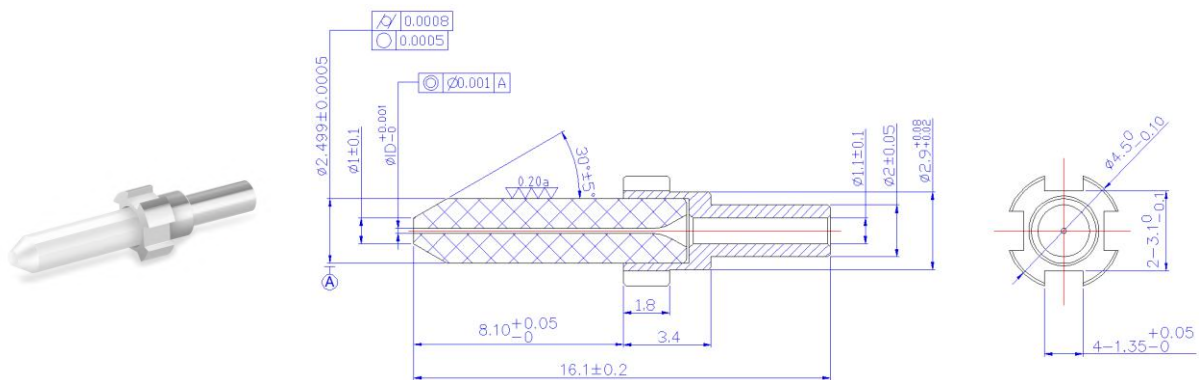
Specification

SC & LC Ferrule		Single-mode	Multimode	Grade B	Master
Outside Diameter	(mm)	SC Ø2.4990 / LC Ø1.2490			
OD Tolerance	(mm)	±0.0005	+0.0005/-0.0015	±0.0003	
Concentricity	(mm)	≤0.001	≤0.004	≤0.0005	≤0.0003
Inner Diameter (ID)	(mm)	φ0.125-φ0.127		φ0.125	
ID Tolerance	(mm)	+0.001/-0	+0.004/-0	+0.0005/-0	
Ferrule Length	(mm)	SC:10.50±0.05 / LC:6.45±0.05			
End Curve Radius	(mm)	SC 20+5/-10			

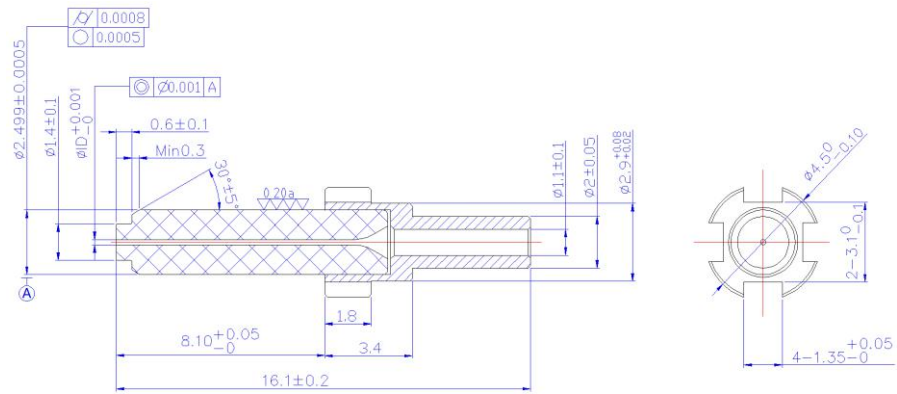
SC/SM/PC



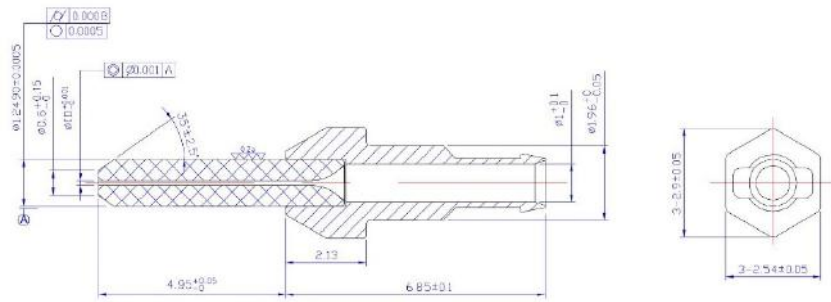
SC/SM/Cone



SC/SM/Step



LC/SM



MU/SM

