

## Non-standard Ferrule

Compared to standard ceramic ferrules, non-standard ferrules herein are featured by their relatively special structure characters in length, ID, OD, outer or inner configuration which is different or beyond the coverage defined for standard ferrules. Typically, there' re categorized as large hole ferrules, small hole ferrules, slotted ferrules, fiber stub, funnel ferrules etc.

As the endless specific types of non-standard ferrules cannot be listed one by one, only typical examples are posted below. Yet, specifications or values stated can be seriously taken as your reference.

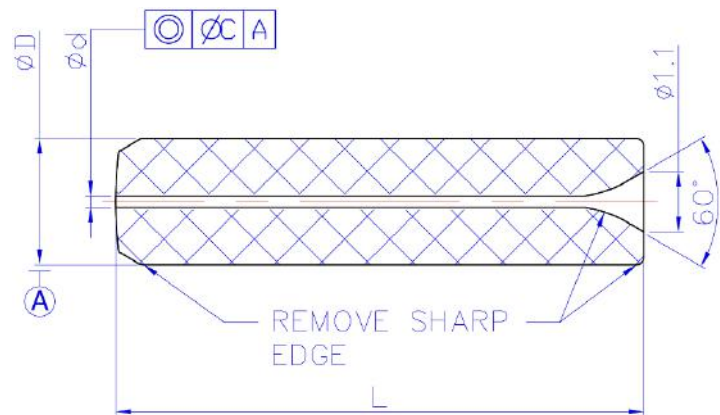
### Features

- High precision
- Long-term reliability
- High physical strength
- Excellent durability
- Great anti-aging performance
- Compliant with RoHS and Reach

### Applications

For special fiber optic connectors and special applications in telecommunication & broadcasting and other communication equipment for instance.

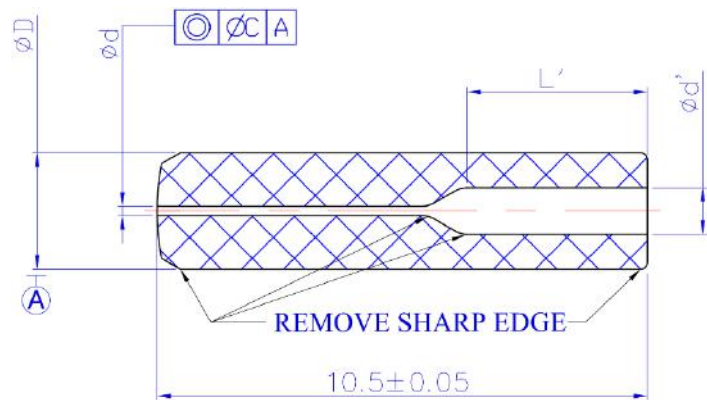
## Large Hole Ferrule



Part NO.		FEN-LH-SC	FEN-LH-LC	FEN-LH-SMA	FEN-LH-SDL
Outside Diameter (D)	(mm)	φ2.4990	φ1.2490	φ3.1740	φ1.1~φ3.2
OD Tolerance	(mm)	±0.001	0.005/-0.0015	0/-0.004	±0.001
Length (L)	(mm)	10.50±0.05	6.40+0.1/0	12.70±0.05	5~12.50
ID Range (d)	(μm)	128~200	201~400	401~700	
ID Tolerance	(μm)	≤5	≤10	≤10	
Concentricity (C)	(μm)	≤10	≤20	≤20	

**Note:** ID Tolerance can be controlled specifically upon requirements

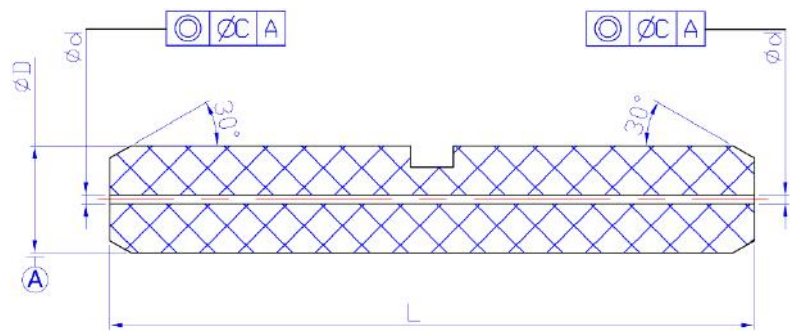
## Funnel Ferrule



Part NO.		FEN-SC-Funnel-1	FEN-SC-Funnel-2
Outside Diameter (D)	(mm)	$\phi 1.80 \sim \phi 2.50$	$\phi 1.00 \sim \phi 1.40$
Inner Diameter (d)	(mm)	$\phi 0.125 \sim \phi 0.127$	
ID Range (d' )	(mm)	$\phi 1.00$	$\phi 0.42$
Concentricity (C)	(mm)	$\leq 0.001$ (Single-mode); $\leq 0.004$ (Multimode)	
Inner Hole Length (L' )	(mm)	0~5	

**Note:** Information above is for typical structure only, customized products are available.

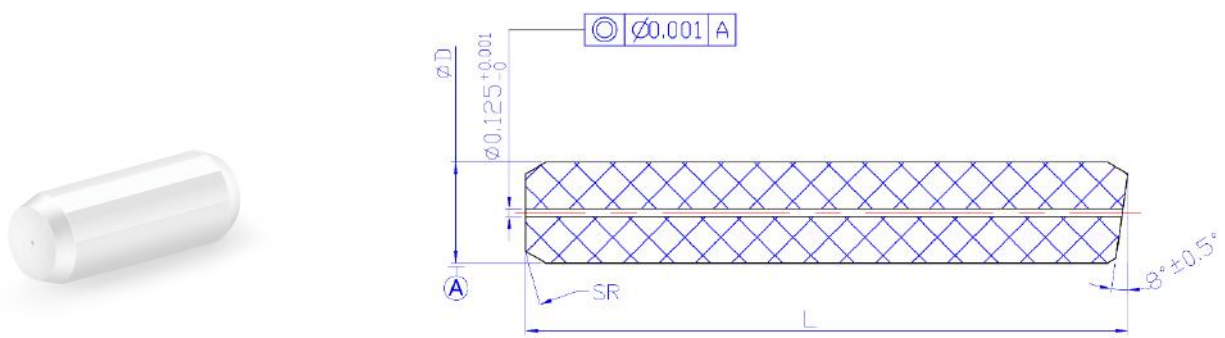
## Other Specified Ferrule



Part NO.		FEN-SC-1	FEN-LC-2
Outside Diameter (D)	(mm)	$\phi 2.4990 \pm 0.0005$	$\phi 1.2490 \pm 0.0005$
Inner Diameter (d)	(mm)	$\phi 0.125 \sim \phi 0.127$	
Concentricity (C)	(mm)	$\leq 0.001$ (Concentricity assurance at both ends)	
Slot	-	Slot or no slot	
Length (L)	(mm)	2.0~14.5	

**Note:** Information above is for typical structure only, customized products are available.

## Fiber Stub

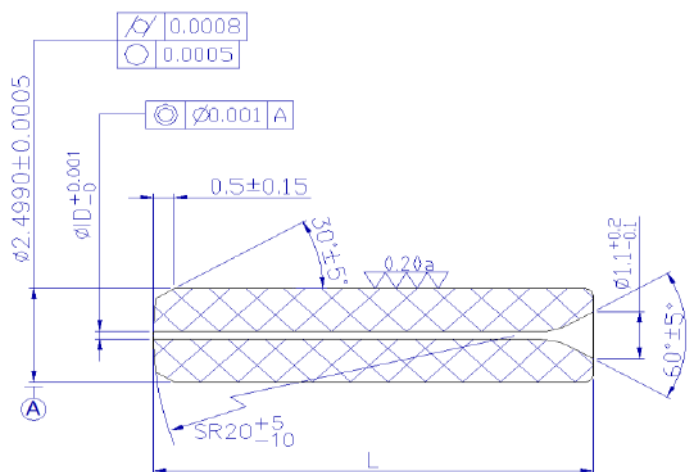


Type		SC SM Stub	LC SM Stub
Outside Diameter (D)	(mm)	$\phi 2.4990 \pm 0.0005$	$\phi 1.2490 \pm 0.0005$
Inner Diameter	(mm)	$\phi 0.125^{+0.001}_0$	
Curve Radius	(mm)	$SR20^{+5}_{-10}$	$SR20^{+5}_{-13}$
Concentricity	(mm)	$\leq 0.001$	
Length (L)	(mm)	5~22	

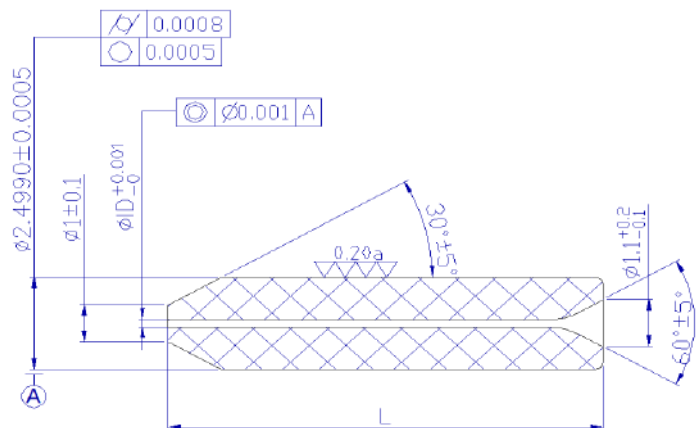
**Note:** The product above is a typical representative only. Customized process is available

## Small Hole Ferrule

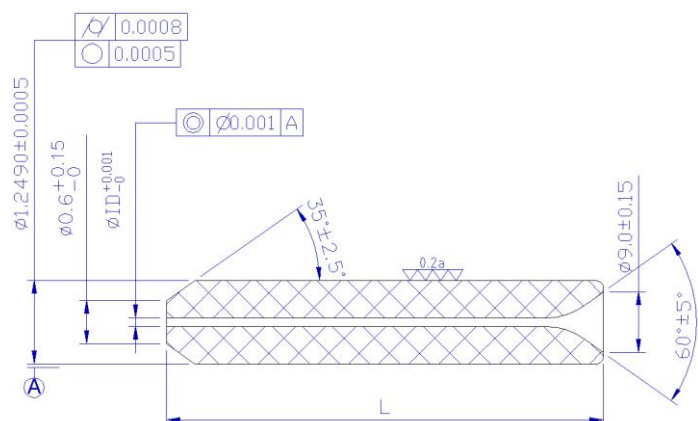
SC/PC/SM



SC/APC/SM



LC/APC/SM



SC & LC 80 Ferrule		Single-mode	Multimode
Outside Diameter	(mm)	SC $\phi 2.4990$ / LC $\phi 1.2490$	
OD Tolerance	(mm)	$\pm 0.0005$	$\pm 0.001$
Concentricity	(mm)	$\leq 0.001$	$\leq 0.004$
Inner Diameter (ID)	(mm)	$\phi 0.80 \sim \phi 0.84$	
ID Tolerance	(mm)	$+0.001/-0$	$+0.004/-0$
Ferrule Length (L)	(mm)	3 ~10.5	

**Note:** The product above is a typical representative only. Customized process is available.