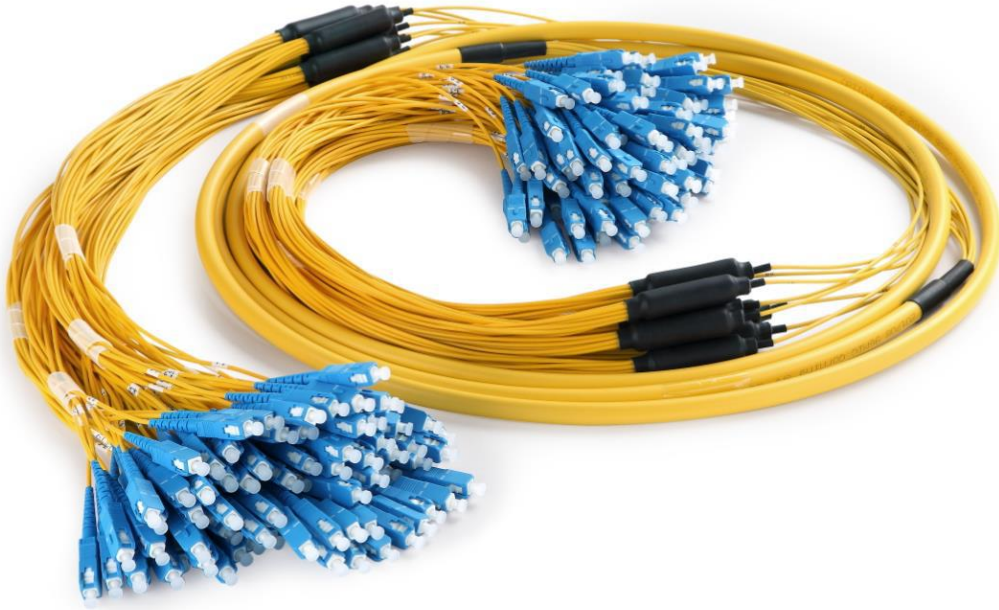


## Multi-Fiber Cable Assemblies



### Introduction

Multi-fiber cable assemblies provide safe and cost-effective installation for many applications. These assemblies help eliminate labor-intensive field termination, yet guarantee reliable performance. Featuring a unified construction for easy fiber identification and rapid installation, these assemblies are built to exceed all TIA and Telcordia® requirements.

### Features

- 4-288 fibers with aramid yarn reinforcement for rugged protection
- Available with 900µm tight buffered fibers or sub-unitized design with 12 250µm fibers per tube
- Highly flexible for ease of routing
- Pre-installed pulling eye kits available on certain products
- High precision connector
- UPC APC end face polish
- LC, MU, SC, FC, ST, all single fiber connector
- Customized length available
- 100% factory terminated and tested
- ROHS Compliant

## Applications

- Headend termination to a fiber "backbone"
- Termination of fiber rack systems
- Multi-floor deployment where select fibers are used at each floor
- Intrabuilding "backbones"
- Data center systems

## Standard Compliance

- TIA/EIA 604 Series
- IEC 61754 Series
- IEC 71753-1
- GR 2866-Core
- GR 326-Core

## General Specification

Constructions	Descriptions
Fiber Count	4-288F
Fiber Mode	Single mode: G.652/G.657 Multimode: OM1, OM2, OM3, OM4
Fiber Brand	SMF-28® Ultra optical fiber Corning ClearCurve® multimode fiber
Cable Jacket Material	Low Smoke Zero Halogen (LSZH) PVC PE
Cable Jacket Ratings	Riser (OFNR) Plenum (OFNP)
Cable Jacket Color	G652/G657: Yellow OM1/OM2: Orange OM3: Aqua OM4: Aqua / Magenta or Customized
Fan-out kit material	Metal or non-metal
Fan-out tube color	Same color as cable or 12 color or Customized
Fan-out tube type	Simplex or Duplex
Fan-out tube dia.(mm)	φ0.9/φ1.6/φ2.0/φ3.0 or Customized
Fiber count per sub-unit	8/12/24 or Customized
Connector type	FC/SC/LC/MU/ST/MTRJ/SMA etc
Operating Temperature	-20 °C ~ +70 °C
Storage Temperature	-40 °C ~ +85 °C

Information and specifications are subject to change without notice.  
Please visit [www.china-tscom.com](http://www.china-tscom.com) for more information

## Technical Specification

Optical Properties	Singlemode	Multimode
Insertion Loss (dB) *	$UPC \leq 0.2; APC \leq 0.3$	$PC \leq 0.2$
Return Loss (dB)	$UPC \geq 50; APC \geq 60$	$PC \geq 20$
Wavelength (nm)	1310/1550	850/1300
Durability	$\leq 0.3(\text{dB})$ typical change, 500 matings	

**Note:**

IL Test method: IEC 61300-3-4 insertion B.