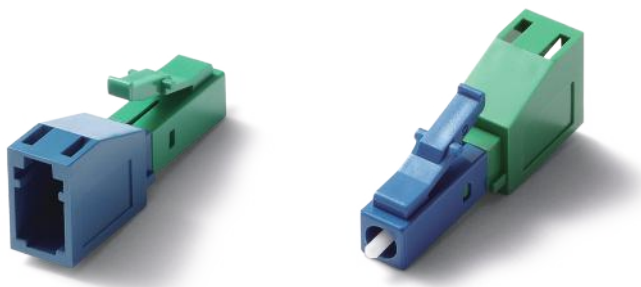


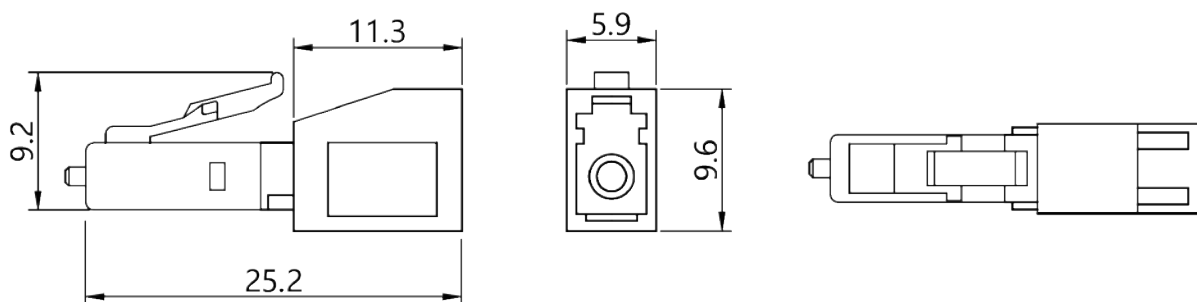
# LC-LC

## Hybrid Adapter

### LC-LC Hybrid Adapter



### DIAGRAM



### Specifications

Connector	LC	Fiber Mode	9/125
Body Type	Simplex	Gender Type	Female to male
Housing Material	Plastic	Insertion Loss	≤0.5dB
Working Temperature	-25°C ~ +70°C	Durability	≥500 times

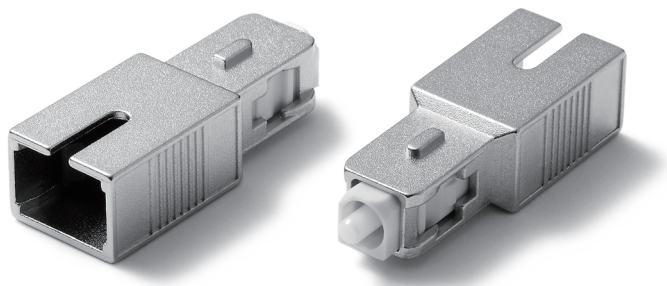
### Ordering Information

Part Number	Description
AD.LCLC.BL-S-ZR-00	Adapter LC/UPC to LC/APC Hybrid, 9/125, Female to male, Blue & Green
AD.LCLC.BL-S-ZR-01	Adapter LC/APC to LC/UPC Hybrid, 9/125, Female to male, Green & Blue

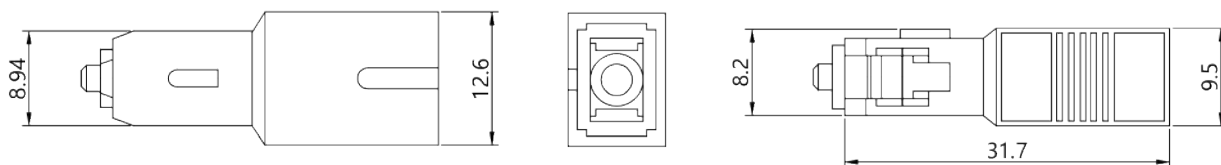
# SC-SC

## Hybrid Adapter

### SC-SC Hybrid Adapter



### DIAGRAM



### Specifications

Connector	SC	Fiber Mode	9/125
Body Type	Simplex	Gender Type	Female to male
Housing Material	Metal	Insertion Loss	≤0.5dB
Working Temperature	-25°C ~ +70°C	Durability	≥500 times

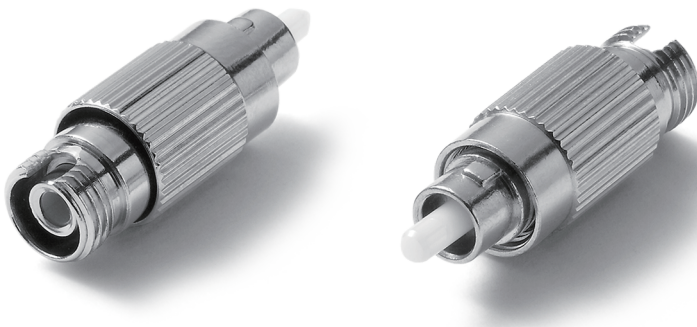
### Ordering Information

Part Number	Description
AD.SCSC.BL-S-ZR-01	Adapter SC/UPC to SC/APC Hybrid, 9/125, Female to male, Metal
AD.SCSC.BL-S-ZR-00	Adapter SC/APC to SC/UPC Hybrid, 9/125, Female to male, Metal

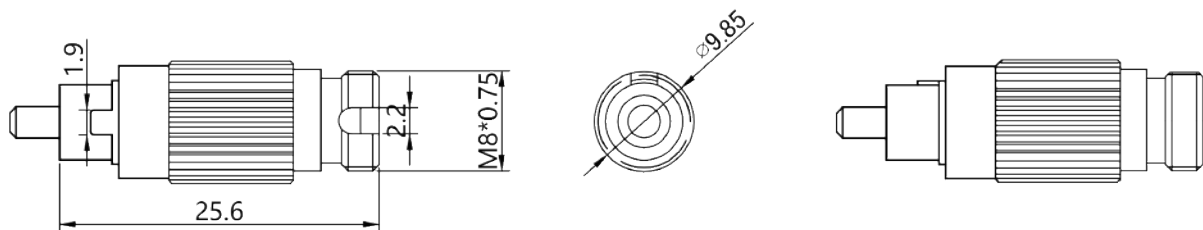
# FC-FC

## Hybrid Adapter

### FC-FC Hybrid Adapter



#### DIAGRAM



#### Specifications

Connector	FC	Fiber Mode	9/125
Body Type	Simplex	Gender Type	Female to male
Housing Material	Metal	Insertion Loss	≤0.5dB
Working Temperature	-25°C ~ +70°C	Durability	≥500 times

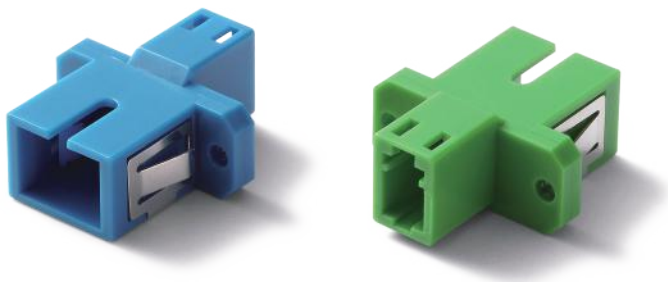
#### Ordering Information

Part Number	Description
AD.FCFC.ME-S-ZR-00	Adapter FC/UPC to FC/APC Hybrid, 9/125, Female to male, Metal

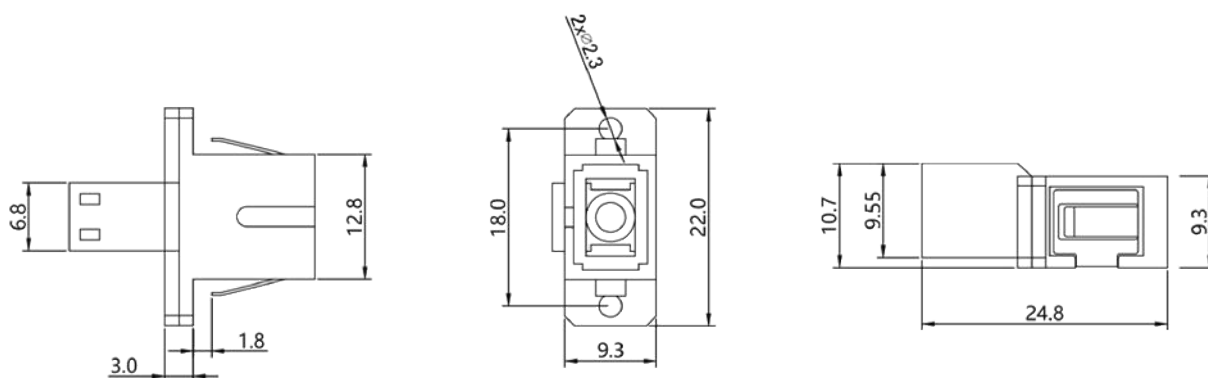
# LC-SC

## Hybrid Adapter

### LC-SC Hybrid Adapter



### DIAGRAM



### Specifications

Connector	LC, SC	Fiber Mode	9/125
Body Type	Simplex	Gender Type	Female to Female
Housing Material	Plastic	Insertion Loss	≤0.5dB
Working Temperature	-25°C ~ +70°C	Durability	≥500 times

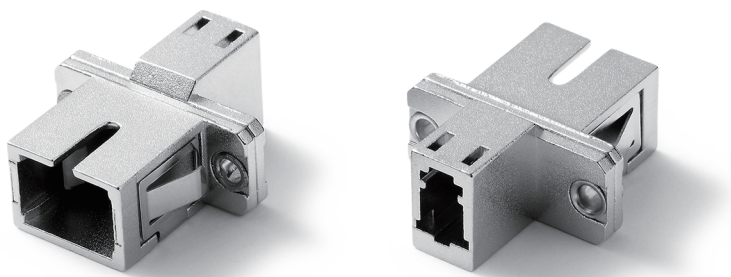
### Ordering Information

Part Number	Description
AD.LCSC.BL-S-ZR-10	Adapter LC/UPC to SC/UPC Hybrid, 9/125, Female to Female, Blue
AD.LCSC.GR-S-ZR-02	Adapter LC/APC to SC/APC Hybrid, 9/125, Female to Female, Green

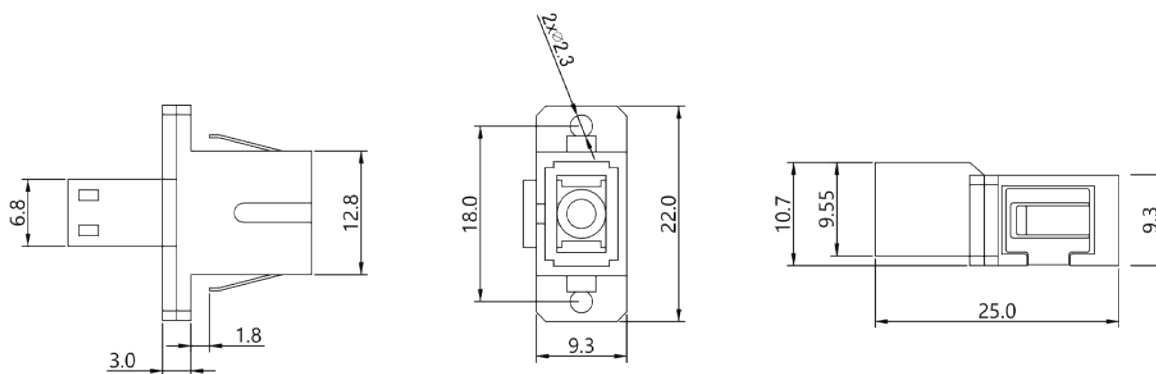
# LC-SC

## Hybrid Adapter

### LC-SC Hybrid Adapter



### DIAGRAM



### Specifications

Connector	LC, SC	Fiber Mode	9/125
Body Type	Simplex	Gender Type	Female to Female
Housing Material	Metal	Insertion Loss	≤0.5dB
Working Temperature	-25°C ~ +70°C	Durability	≥500 times

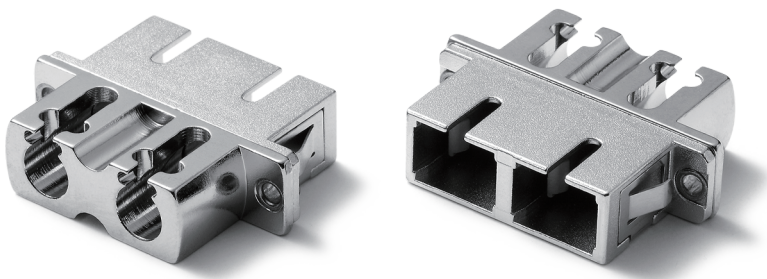
### Ordering Information

Part Number	Description
AD.LCSC.ME-S-ZR-06	Adapter LC/UPC to SC/UPC Hybrid, 9/125, Female to Female, Metal

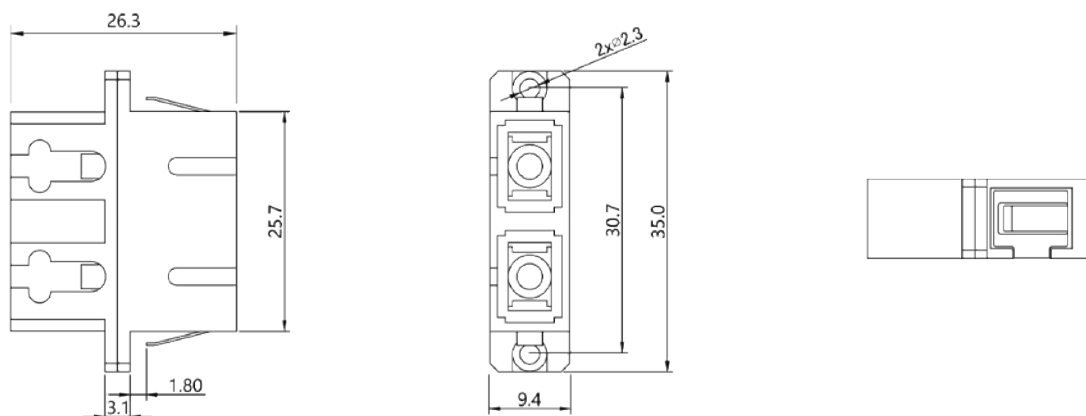
# LC-SC

## Hybrid Adapter

### LC-SC Hybrid Adapter



#### DIAGRAM



#### Specifications

Connector	LC, SC	Fiber Mode	9/125
Body Type	Deplex	Gender Type	Female to Female
Housing Material	Metal	Insertion Loss	≤0.5dB
Working Temperature	-25°C ~ +70°C	Durability	≥500 times

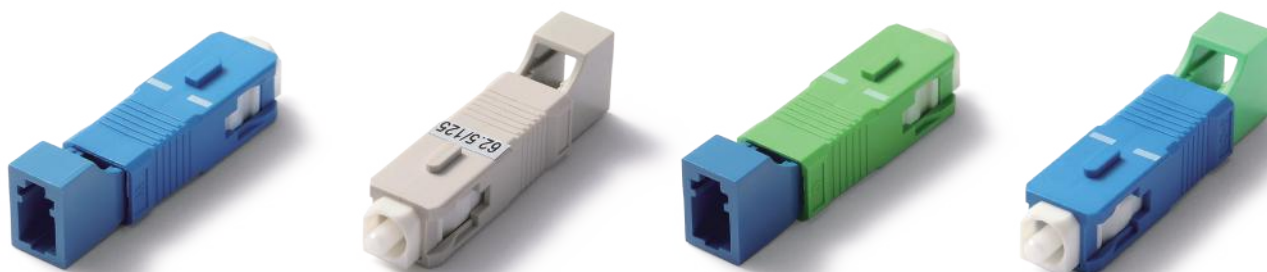
#### Ordering Information

Part Number	Description
AD.LCSC.ME-D-ZR-01	Adapter LC/UPC to SC/UPC Hybrid, 9/125, Female to Female, Metal

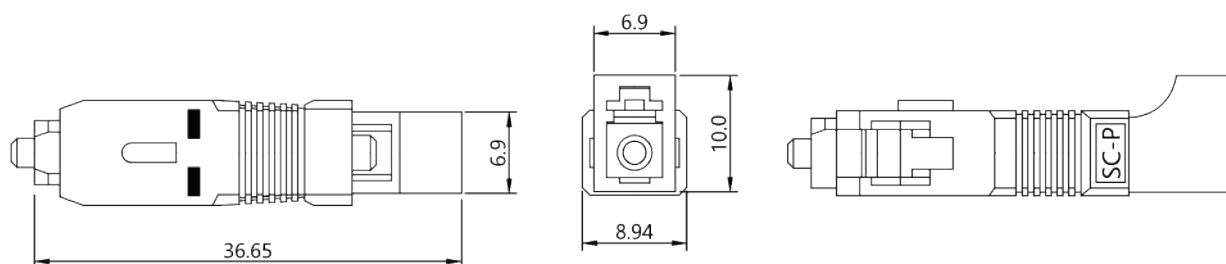
# LC-SC

## Hybrid Adapter

### LC-SC Hybrid Adapter



### DIAGRAM



### Specifications

Connector	LC, SC	Fiber Mode	9/125, 62.5/125, 50/125
Body Type	Simplex	Gender Type	Female to male
Housing Material	Plastic	Insertion Loss	≤0.5dB
Working Temperature	-25°C ~ +70°C	Durability	≥500 times

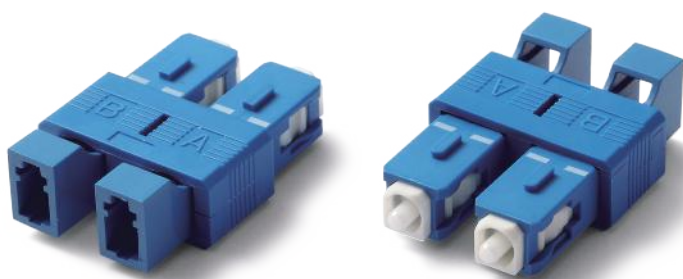
### Ordering Information

Part Number	Description
AD.LCSC.BL-S-ZR-09	Adapter LC/UPC to SC/UPC Hybrid, 9/125, Female to male, Blue
AD.LCSC.BL-S-ZR-08	Adapter LC/UPC to SC/APC Hybrid, 9/125, Female to male, Blue & Green
AD.LCSC.BL-S-ZR-12	Adapter LC/APC to SC/UPC Hybrid, 9/125, Female to male, Green & Blue
AD.LCSC.BE-S-ZR-10	Adapter LC/UPC to SC/UPC Hybrid, 62.5/125, Female to male, Beige
AD.LCSC.BE-S-ZR-08	Adapter LC/UPC to SC/UPC Hybrid, 50/125, Female to male, Beige

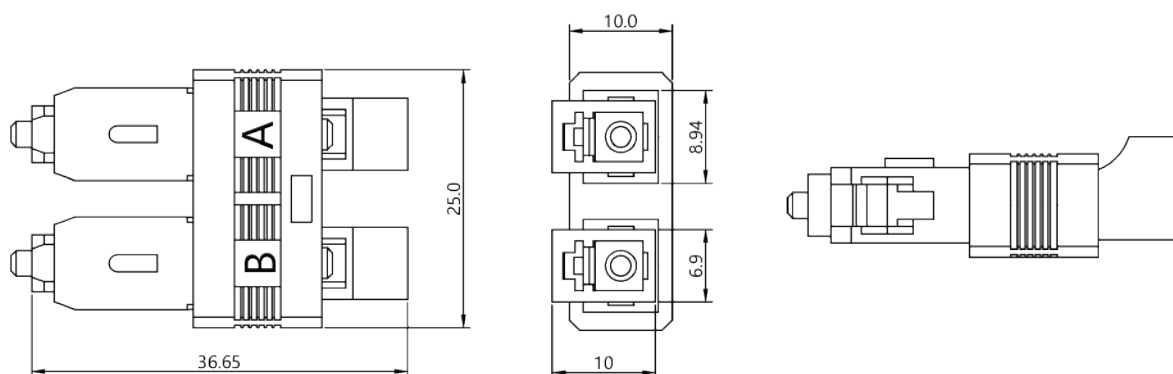
# LC-SC

## Hybrid Adapter

### LC-SC Hybrid Adapter



### DIAGRAM



### Specifications

Connector	LC, SC	Fiber Mode	9/125
Body Type	Deplex	Gender Type	Female to male
Housing Material	Plastic	Insertion Loss	≤0.5dB
Working Temperature	-25°C ~ +70°C	Durability	≥500 times

### Ordering Information

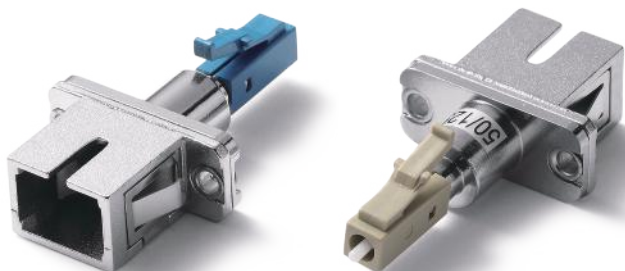
Part Number	Description
AD.LCSC.BL-D-ZR-09	Adapter LC/UPC to SC/UPC Hybrid, 9/125, Female to male, Blue



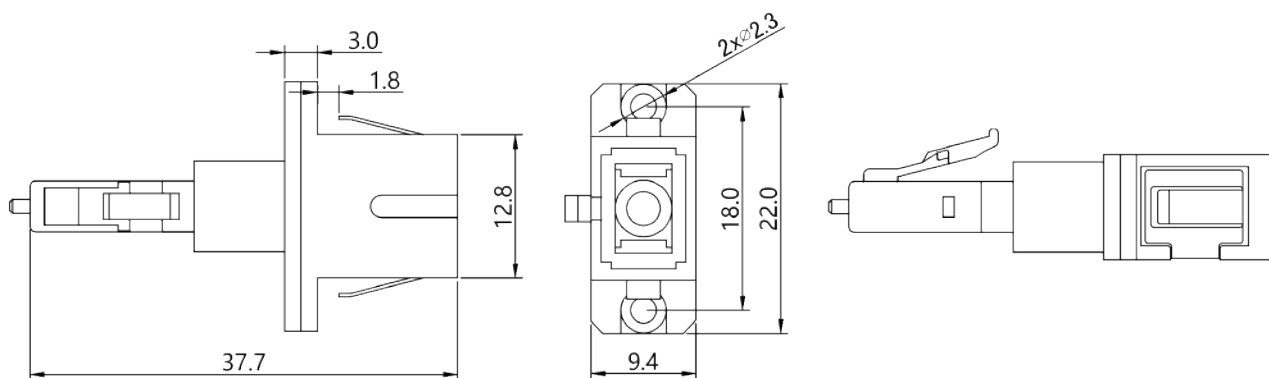
# LC-SC

## Hybrid Adapter

### LC-SC Hybrid Adapter



### DIAGRAM



### Specifications

Connector	LC, SC	Fiber Mode	9/125, 62.5/125, 50/125
Body Type	Simplex	Gender Type	Male to Female
Housing Material	Plastic, Metal	Insertion Loss	≤0.5dB
Working Temperature	-25°C ~ +70°C	Durability	≥500 times

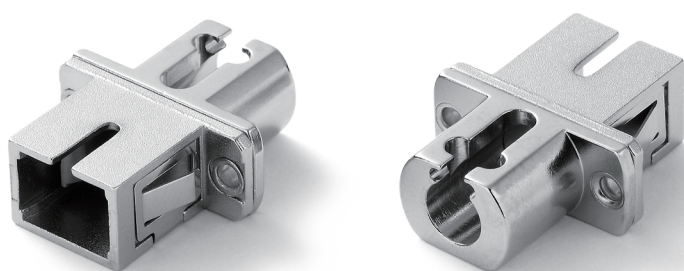
### Ordering Information

Part Number	Description
AD.LCSC.BL-S-ZR-11	Adapter LC/UPC to SC/UPC Hybrid, 9/125, Male to Female, Blue & Metal
AD.LCSC.BE-S-ZR-11	Adapter LC/UPC to SC/UPC Hybrid, 62.5/125, Male to Female, Beige & Metal
AD.LCSC.BE-S-ZR-09	Adapter LC/UPC to SC/UPC Hybrid, 50/125, Male to Female, Beige & Metal

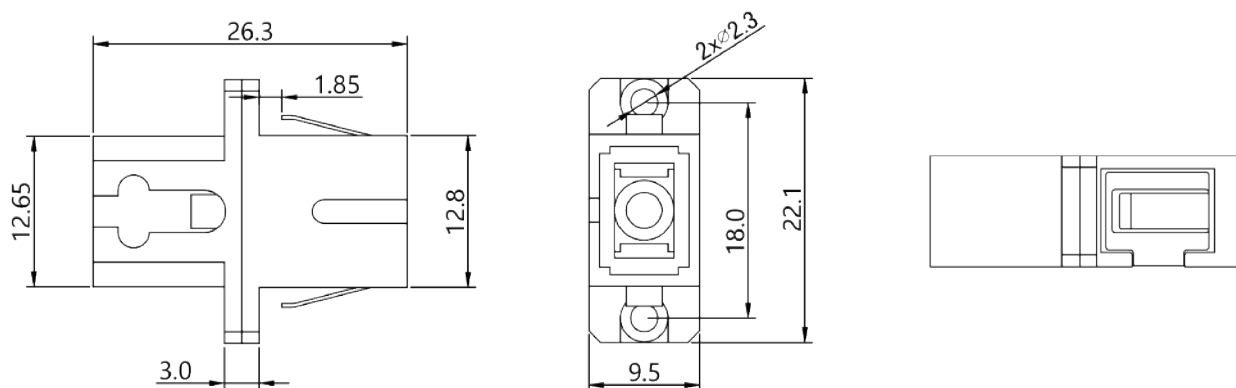
# LC-SC

## Hybrid Adapter

### LC-SC Hybrid Adapter



### DIAGRAM



### Specifications

Connector	LC, SC	Fiber Mode	9/125
Body Type	Simplex	Gender Type	Female to Female
Housing Material	Metal	Insertion Loss	≤0.5dB
Working Temperature	-25°C ~ +70°C	Durability	≥500 times

### Ordering Information

Part Number	Description
AD.LCSC.ME-S-ZR-05	Adapter LC/UPC to SC/UPC Hybrid, 9/125, Female to Female, Metal

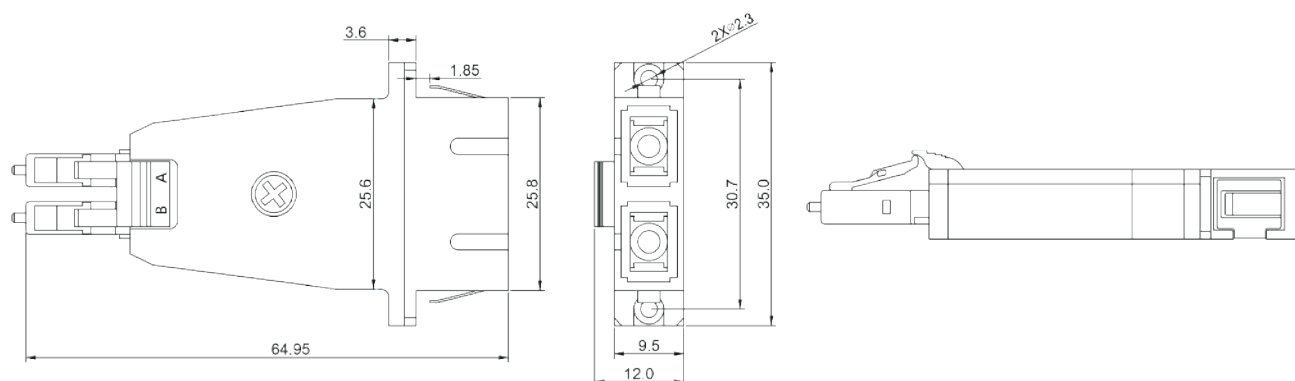
# LC-SC

## Hybrid Adapter

### LC-SC Hybrid Adapter



### DIAGRAM



### Specifications

Connector	LC, SC	Fiber Mode	50/125, 62.5/125
Body Type	Deplex	Gender Type	Male to Female
Housing Material	Plastic, Metal	Insertion Loss	≤0.5dB
Working Temperature	-25°C ~ +70°C	Durability	≥500 times

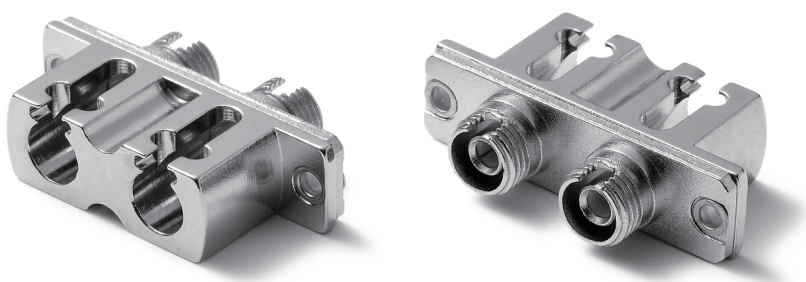
### Ordering Information

Part Number	Description
AD.LCSC.BE-D-ZR-12	Adapter LC/UPC to SC/UPC Hybrid, 50/125, Male to Female, Beige & Metal
AD.LCSC.BE-D-ZR-11	Adapter LC/UPC to SC/UPC Hybrid, 62.5/125, Male to Female, Beige & Metal

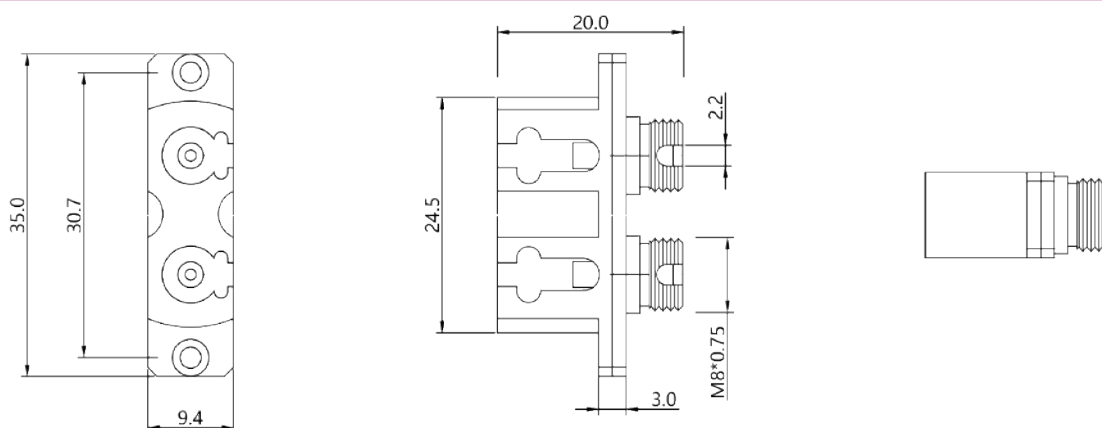
# LC-FC

## Hybrid Adapter

### LC-FC Hybrid Adapter



### DIAGRAM



### Specifications

Connector	LC, FC	Fiber Mode	9/125
Body Type	Deplex	Gender Type	Female to Female
Housing Material	Metal	Insertion Loss	≤0.5dB
Working Temperature	-25°C ~ +70°C	Durability	≥500 times

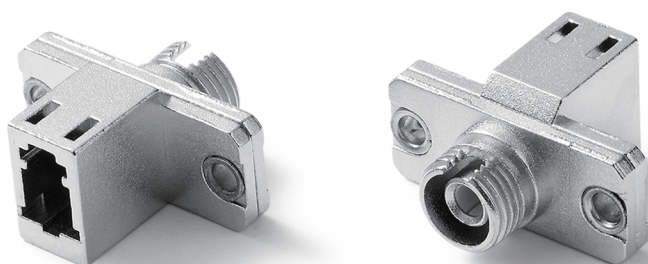
### Ordering Information

Part Number	Description
AD.FCLC.ME-D-ZR-08	Adapter LC/UPC to FC/UPC Hybrid, 9/125, Female to Female, Metal

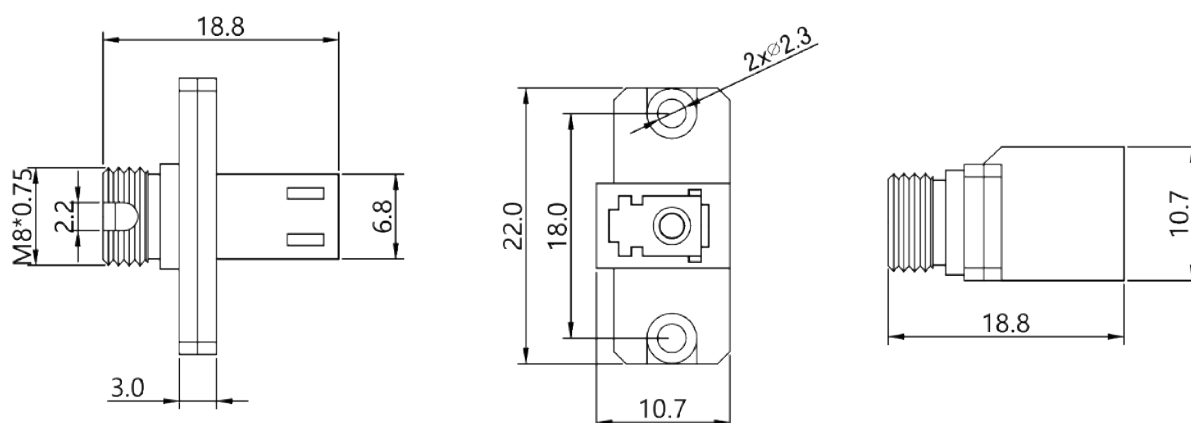
# LC-FC

## Hybrid Adapter

### LC-FC Hybrid Adapter



### DIAGRAM



### Specifications

Connector	LC, FC	Fiber Mode	9/125
Body Type	Simplex	Gender Type	Female to Female
Housing Material	Metal	Insertion Loss	≤0.5dB
Working Temperature	-25°C ~ +70°C	Durability	≥500 times

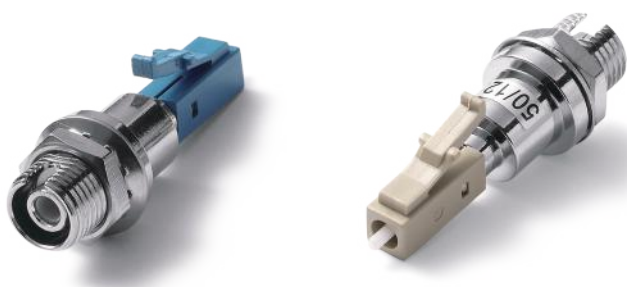
### Ordering Information

Part Number	Description
AD.FCLC.ME-S-ZR-12	Adapter LC/UPC to FC/UPC Hybrid, 9/125, Female to Female, Metal

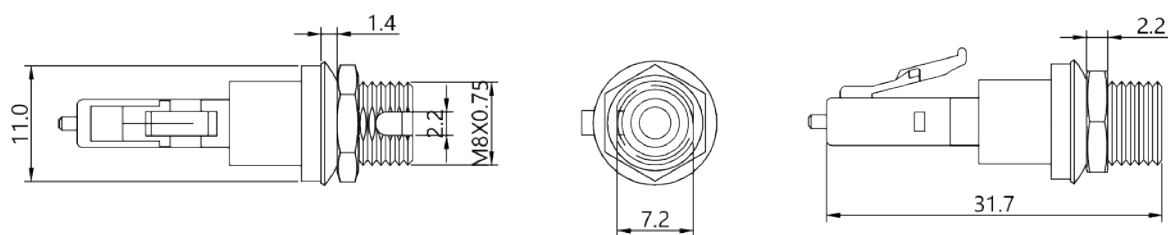
# LC-FC

## Hybrid Adapter

### LC-FC Hybrid Adapter



### DIAGRAM



### Specifications

Connector	LC, FC	Fiber Mode	9/125, 62.5/125, 50/125
Body Type	Simplex	Gender Type	Male to Female
Housing Material	Plastic, Metal	Insertion Loss	≤0.5dB
Working Temperature	-25°C ~ +70°C	Durability	≥500 times

### Ordering Information

Part Number	Description
AD.FCLC.BL-S-ZR-03	Adapter LC/UPC to FC/UPC Hybrid, 9/125, Male to Female, Blue & Metal
AD.FCLC.BE-S-ZR-05	Adapter LC/UPC to FC/UPC Hybrid, 62.5/125, Male to Female, Beige & Metal
AD.FCLC.BE-S-ZR-04	Adapter LC/UPC to FC/UPC Hybrid, 50/125, Male to Female, Beige & Metal

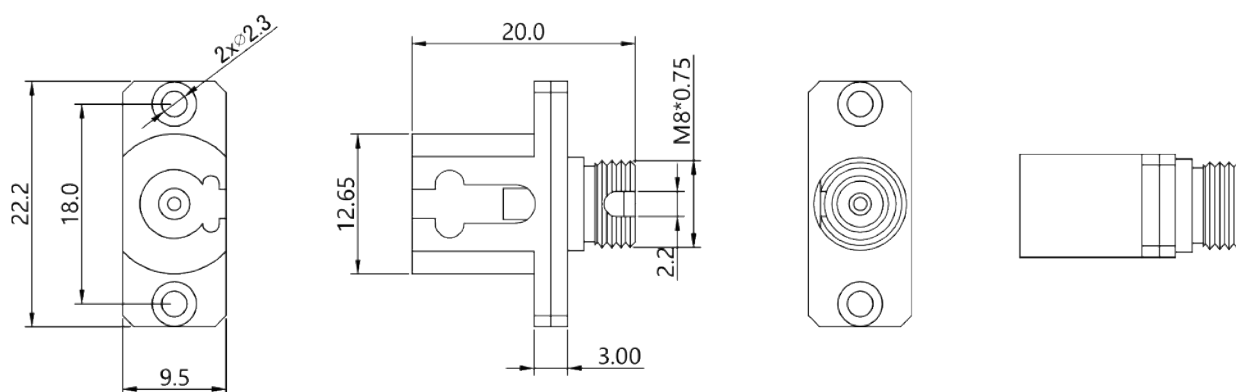
# LC-FC

## Hybrid Adapter

### LC-FC Hybrid Adapter



### DIAGRAM



### Specifications

Connector	LC, FC	Fiber Mode	9/125
Body Type	Simplex	Gender Type	Female to Female
Housing Material	Metal	Insertion Loss	≤0.5dB
Working Temperature	-25°C ~ +70°C	Durability	≥500 times

### Ordering Information

Part Number	Description
AD.FCLC.ME-S-ZR-08	Adapter LC/UPC to FC/UPC Hybrid, 9/125, Female to Female, Metal
AD.FCLC.ME-S-ZR-11	Adapter LC/APC to FC/APC Hybrid, 9/125, Female to Female, Metal

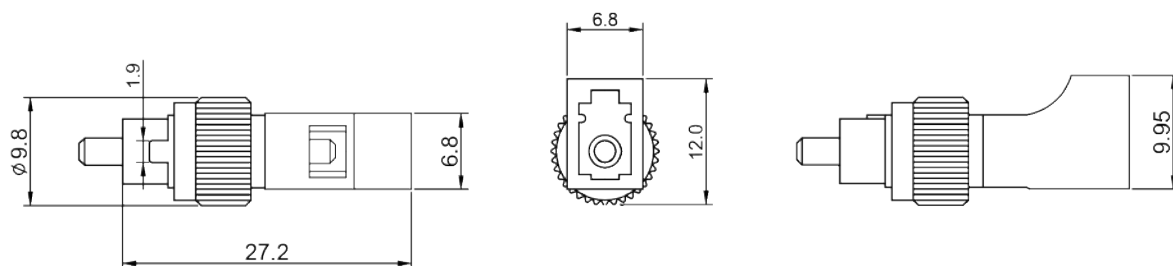
# LC-FC

## Hybrid Adapter

### LC-FC Hybrid Adapter



### DIAGRAM



### Specifications

Connector	LC, FC	Fiber Mode	9/125, 62.5/125, 50/125
Body Type	Simplex	Gender Type	Female to Male
Housing Material	Plastic, Metal	Insertion Loss	≤0.5dB
Working Temperature	-25°C ~ +70°C	Durability	≥500 times

### Ordering Information

Part Number	Description
AD.FCLC.BL-S-ZR-02	Adapter LC/UPC to FC/UPC Hybrid, 9/125, Female to Male, Blue & Metal
AD.FCLC.BE-S-ZR-03	Adapter LC/UPC to FC/UPC Hybrid, 62.5/125, Female to Male, Beige & Metal
AD.FCLC.BE-S-ZR-02	Adapter LC/UPC to FC/UPC Hybrid, 50/125, Female to Male, Beige & Metal
AD.FCLC.ME-S-ZR-10	Adapter LC/APC to FC/UPC Hybrid, 9/125, Female to Male, Green & Metal
AD.FCLC.ME-S-ZR-02	Adapter LC/APC to FC/APC Hybrid, 9/125, Female to Male, Green & Metal



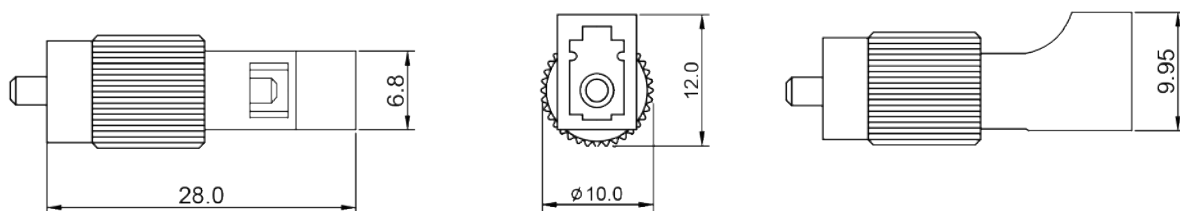
# LC-FC

## Hybrid Adapter

### LC-FC Hybrid Adapter



### DIAGRAM



### Specifications

Connector	LC, FC	Fiber Mode	9/125
Body Type	Simplex	Gender Type	Female to Male
Housing Material	Plastic, Metal	Insertion Loss	≤0.5dB
Working Temperature	-25°C ~ +70°C	Durability	≥500 times

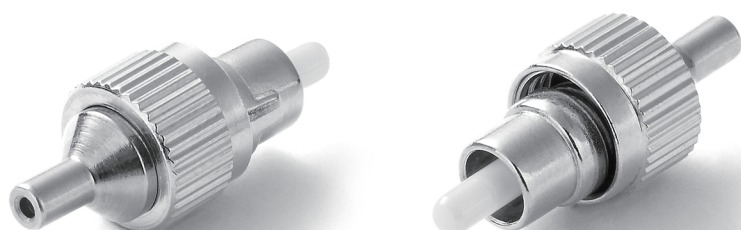
### Ordering Information

Part Number	Description
AD.FCLC.BL-S-ZR-04	Adapter LC/UPC to FC/UPC Hybrid, 9/125, Female to Male, Blue & Metal

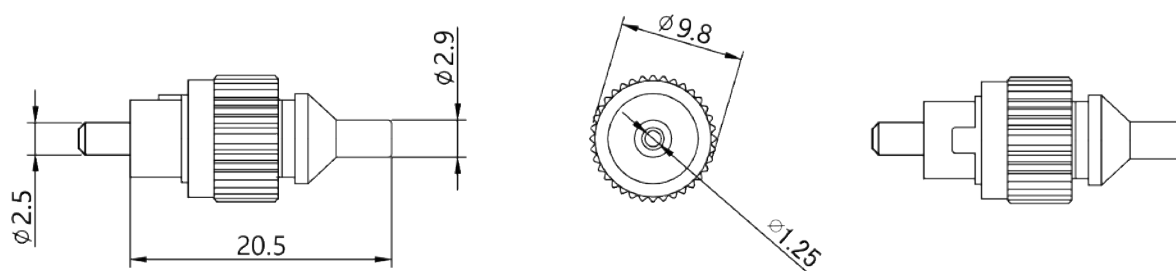
# LC-FC

## Hybrid Adapter

### LC-FC Hybrid Adapter



### DIAGRAM



### Specifications

Connector	LC, FC	Fiber Mode	9/125
Body Type	Simplex	Gender Type	Female to Male
Housing Material	Metal	Insertion Loss	≤0.5dB
Working Temperature	-25°C ~ +70°C	Durability	≥500 times

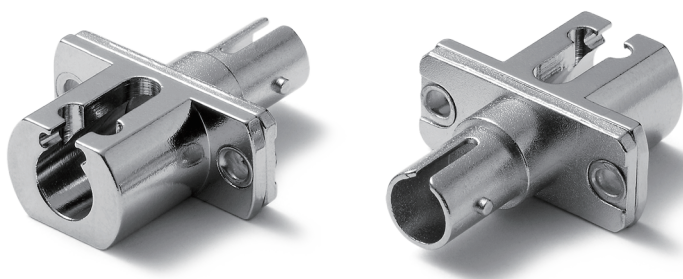
### Ordering Information

Part Number	Description
AD.FCLC.ME-S-ZR-09	Adapter LC/UPC to FC/UPC Hybrid, 9/125, Female to Male, Metal

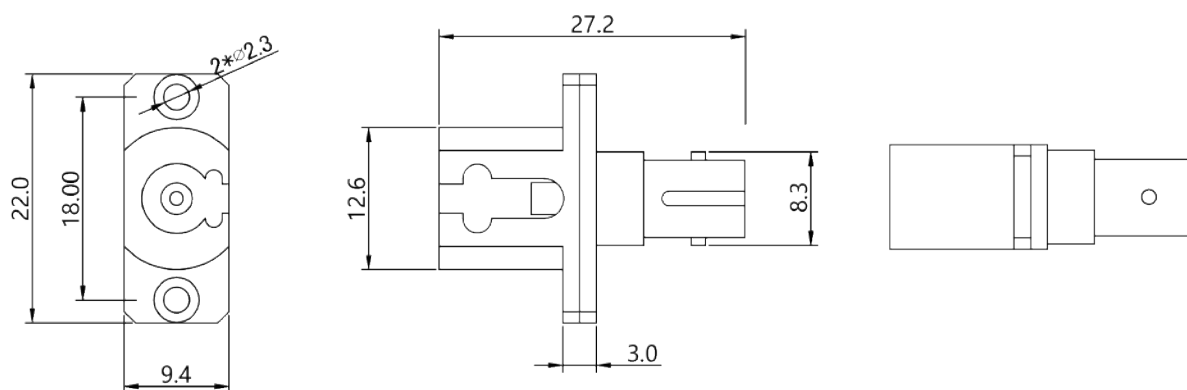
# LC-ST

## Hybrid Adapter

### LC-ST Hybrid Adapter



### DIAGRAM



### Specifications

Connector	LC, ST	Fiber Mode	9/125
Body Type	Simplex	Gender Type	Female to Female
Housing Material	Metal	Insertion Loss	$\leq 0.5\text{dB}$
Working Temperature	$-25^{\circ}\text{C} \sim +70^{\circ}\text{C}$	Durability	$\geq 500$ times

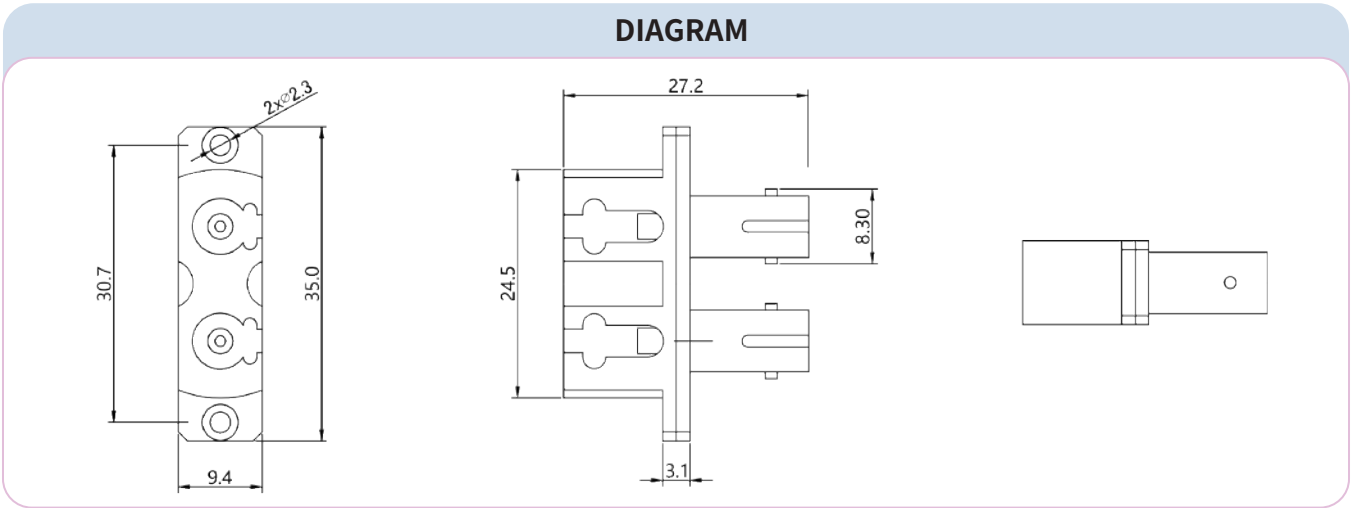
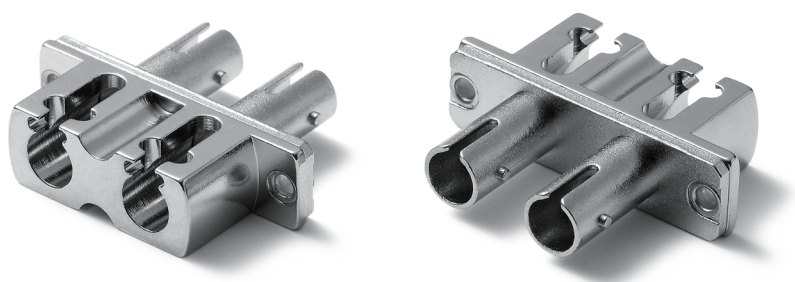
### Ordering Information

Part Number	Description
AD.LCST.ME-S-ZR-03	Adapter LC/UPC to ST/UPC Hybrid, 9/125, Female to Female, Metal

LC-ST

Hybrid Adapter

LC-ST Hybrid Adapter



Specifications

Connector	LC, ST	Fiber Mode	9/125
Body Type	Deplex	Gender Type	Female to Female
Housing Material	Metal	Insertion Loss	≤0.5dB
Working Temperature	-25℃ ~ +70℃	Durability	≥500 times

Ordering Information

Part Number	Description
AD.LCST.ME-D-ZR-00	Adapter LC/UPC to ST/UPC Hybrid, 9/125, Female to Female, Metal

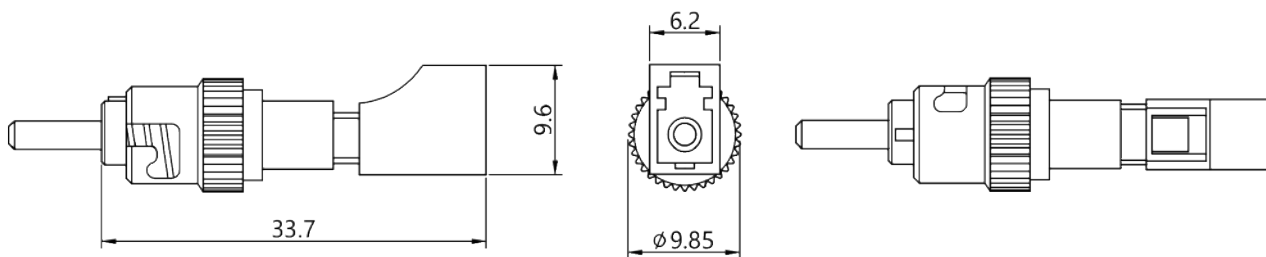
# LC-ST

## Hybrid Adapter

### LC-ST Hybrid Adapter



### DIAGRAM



### Specifications

Connector	LC, ST	Fiber Mode	9/125, 62.5/125, 50/125
Body Type	Simplex	Gender Type	Female to Male
Housing Material	Plastic, Metal	Insertion Loss	≤0.5dB
Working Temperature	-25°C ~ +70°C	Durability	≥500 times

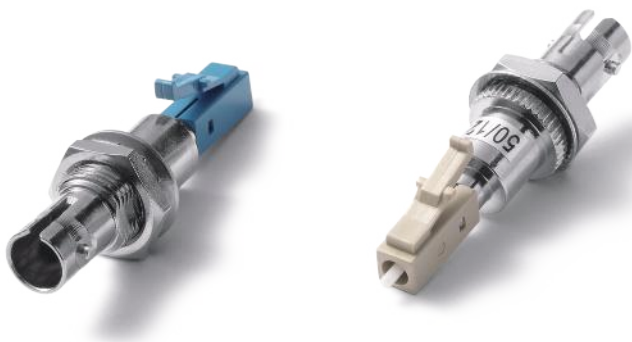
### Ordering Information

Part Number	Description
AD.LCST.BL-S-ZR-02	Adapter LC/UPC to ST/UPC Hybrid, 9/125, Female to Male, Blue & Metal
AD.LCST.BE-S-ZR-03	Adapter LC/UPC to ST/UPC Hybrid, 62.5/125, Female to Male, Beige & Metal
AD.LCST.BE-S-ZR-04	Adapter LC/UPC to ST/UPC Hybrid, 50/125, Female to Male, Beige & Metal

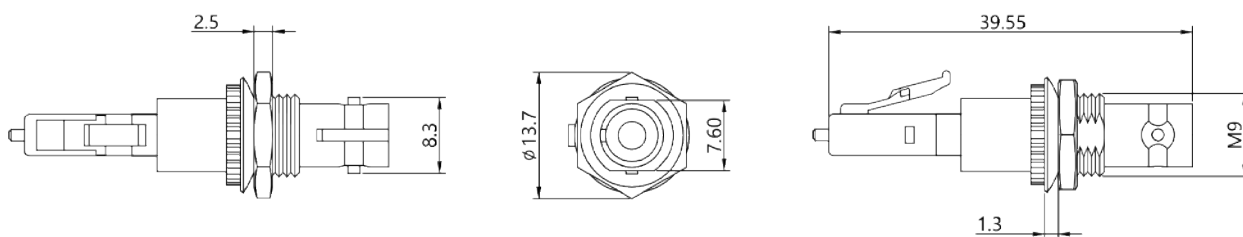
# LC-ST

## Hybrid Adapter

### LC-ST Hybrid Adapter



### DIAGRAM



### Specifications

Connector	LC, ST	Fiber Mode	9/125, 62.5/125, 50/125
Body Type	Simplex	Gender Type	Male to Female
Housing Material	Plastic, Metal	Insertion Loss	≤0.5dB
Working Temperature	-25°C ~ +70°C	Durability	≥500 times

### Ordering Information

Part Number	Description
AD.LCST.BL-S-ZR-01	Adapter LC/UPC to ST/UPC Hybrid, 9/125, Male to Female, Blue & Metal
AD.LCST.BE-S-ZR-02	Adapter LC/UPC to ST/UPC Hybrid, 62.5/125, Male to Female, Beige & Metal
AD.LCST.BE-S-ZR-01	Adapter LC/UPC to ST/UPC Hybrid, 50/125, Male to Female, Beige & Metal

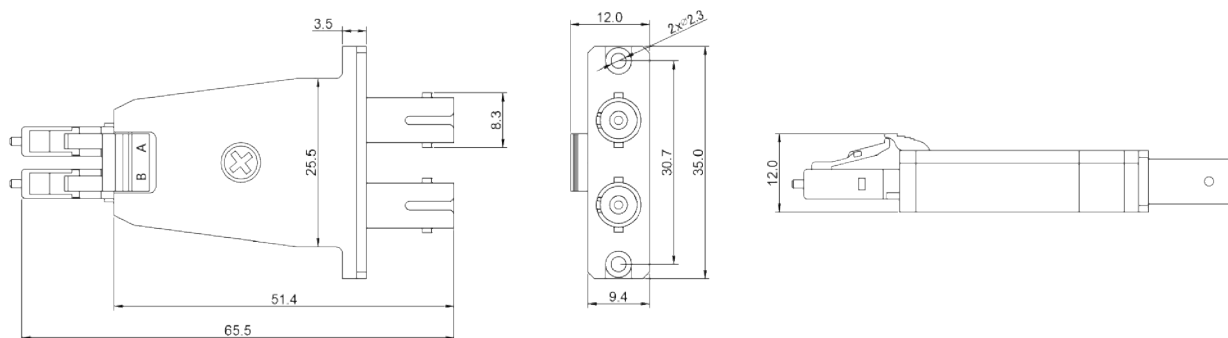
# LC-ST

## Hybrid Adapter

### LC-ST Hybrid Adapter



### DIAGRAM



### Specifications

Connector	LC, ST	Fiber Mode	9/125, 62.5/125, 50/125
Body Type	Deplex	Gender Type	Male to Female
Housing Material	Plastic, Metal	Insertion Loss	≤0.5dB
Working Temperature	-25°C ~ +70°C	Durability	≥500 times

### Ordering Information

Part Number	Description
AD.LCST.BL-D-ZR-01	Adapter LC/UPC to ST/UPC Hybrid, 9/125, Male to Female, Blue & Metal
AD.LCST.BE-D-ZR-02	Adapter LC/UPC to ST/UPC Hybrid, 62.5/125, Male to Female, Beige & Metal
AD.LCST.BE-D-ZR-01	Adapter LC/UPC to ST/UPC Hybrid, 50/125, Male to Female, Beige & Metal

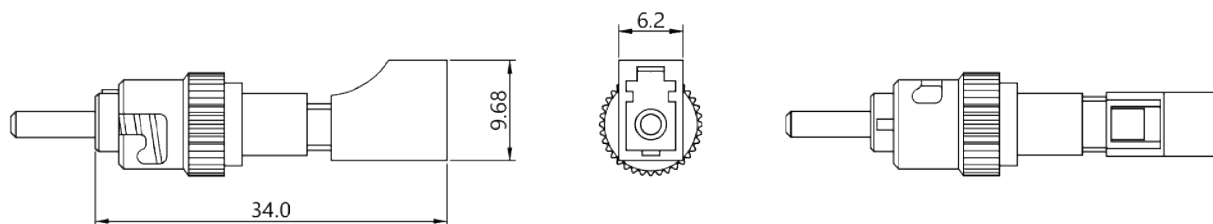
# LC-ST

## Hybrid Adapter

### LC-ST Hybrid Adapter



### DIAGRAM



### Specifications

Connector	LC, ST	Fiber Mode	50/125
Body Type	Simplex	Gender Type	Female to Male
Housing Material	Plastic, Metal	Insertion Loss	≤0.5dB
Working Temperature	-25°C ~ +70°C	Durability	≥500 times

### Ordering Information

Part Number	Description
AD.LCST.BE-S-ZR-04	Adapter LC/UPC to ST/UPC Hybrid, 50/125, Female to Male, Beige & Metal



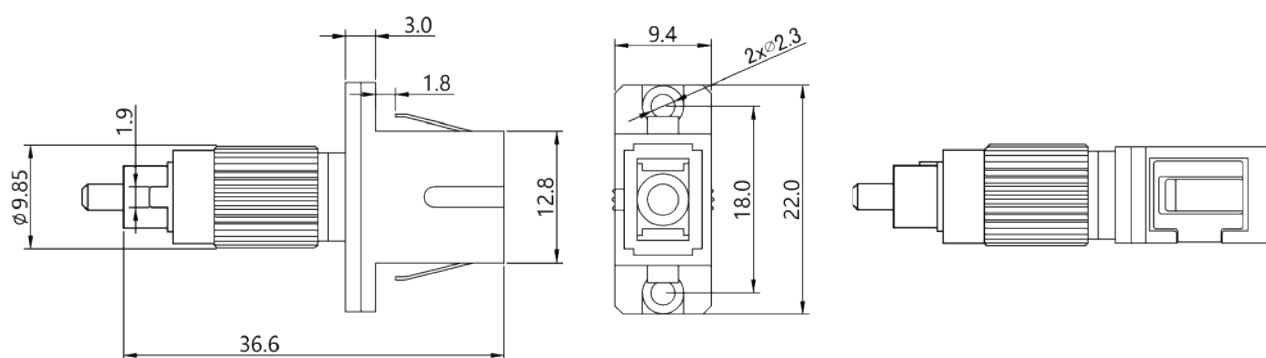
# SC-FC

## Hybrid Adapter

### SC-FC Hybrid Adapter



### DIAGRAM



### Specifications

Connector	SC, FC	Fiber Mode	9/125, 62.5/125, 50/125
Body Type	Simplex	Gender Type	Female to Male
Housing Material	Metal	Insertion Loss	≤0.5dB
Working Temperature	-25°C ~ +70°C	Durability	≥500 times

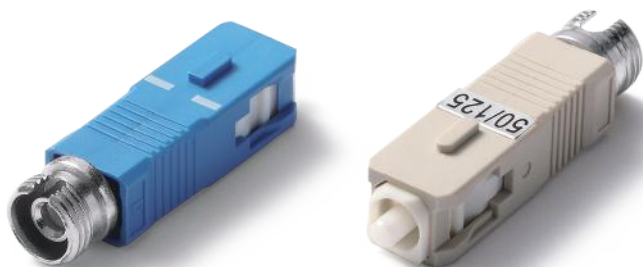
### Ordering Information

Part Number	Description
AD.FCSC.BL-S-ZR-08	Adapter SC/UPC to FC/UPC Hybrid, 9/125, Female to Male, Metal
AD.FCSC.ME-S-ZR-11	Adapter SC/UPC to FC/UPC Hybrid, 62.5/125, Female to Male, Metal
AD.FCSC.ME-S-ZR-12	Adapter SC/UPC to FC/UPC Hybrid, 50/125, Female to Male, Metal

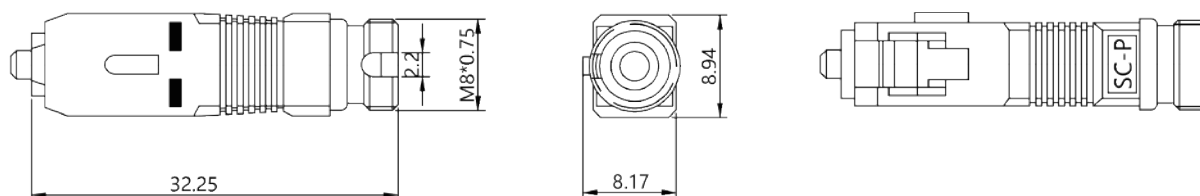
# SC-FC

## Hybrid Adapter

### SC-FC Hybrid Adapter



### DIAGRAM



### Specifications

Connector	SC, FC	Fiber Mode	9/125, 62.5/125, 50/125
Body Type	Simplex	Gender Type	Male to Female
Housing Material	Plastic, Metal	Insertion Loss	≤0.5dB
Working Temperature	-25°C ~ +70°C	Durability	≥500 times

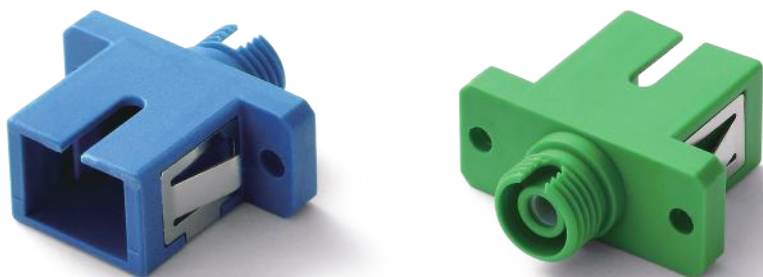
### Ordering Information

Part Number	Description
AD.FCSC.BL-S-ZR-09	Adapter SC/UPC to FC/UPC Hybrid, 9/125, Male to Female, Blue & Metal
AD.FCSC.BE-S-ZR-00	Adapter SC/UPC to FC/UPC Hybrid, 62.5/125, Male to Female, Beige & Metal
AD.FCSC.BE-S-ZR-01	Adapter SC/UPC to FC/UPC Hybrid, 50/125, Male to Female, Beige & Metal

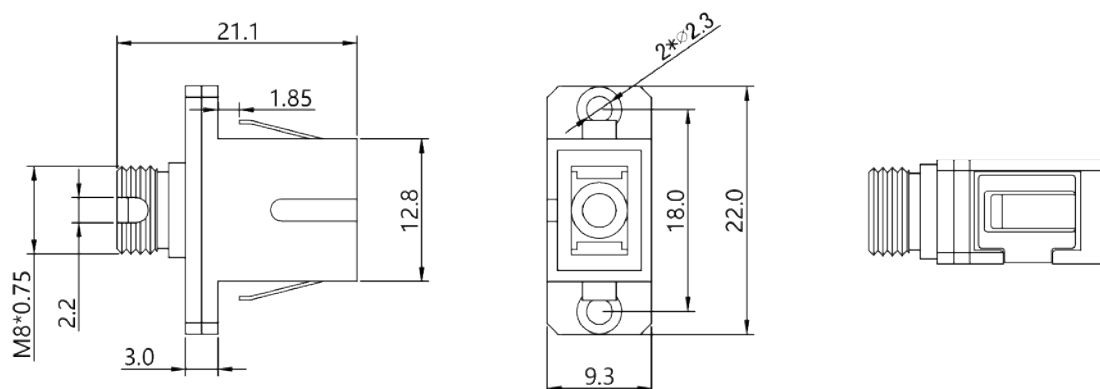
# SC-FC

## Hybrid Adapter

### SC-FC Hybrid Adapter



### DIAGRAM



### Specifications

Connector	SC, FC	Fiber Mode	9/125
Body Type	Simplex	Gender Type	Female to Female
Housing Material	Plastic	Insertion Loss	≤0.2dB
Working Temperature	-25°C ~ +70°C	Durability	≥500 times

### Ordering Information

Part Number	Description
AD.FCSC.GR-S-ZR-01	Adapter SC/APC to FC/APC Hybrid, 9/125, Female to Female, Green
AD.FCSC.BL-S-ZR-05	Adapter SC/UPC to FC/UPC Hybrid, 9/125, Female to Female, Blue

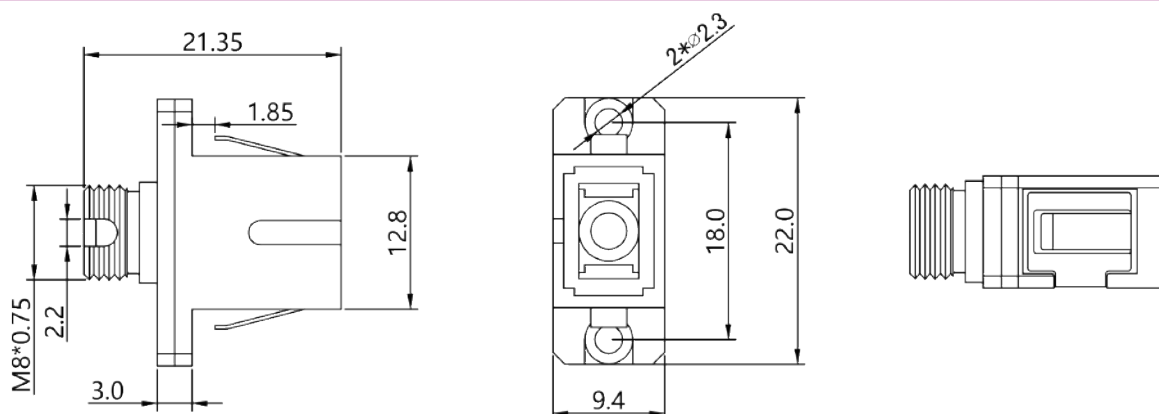
# SC-FC

## Hybrid Adapter

### SC-FC Hybrid Adapter



### DIAGRAM



### Specifications

Connector	SC, FC	Fiber Mode	9/125
Body Type	Simplex	Gender Type	Female to Female
Housing Material	Metal	Insertion Loss	≤0.2dB
Working Temperature	-25°C ~ +70°C	Durability	≥500 times

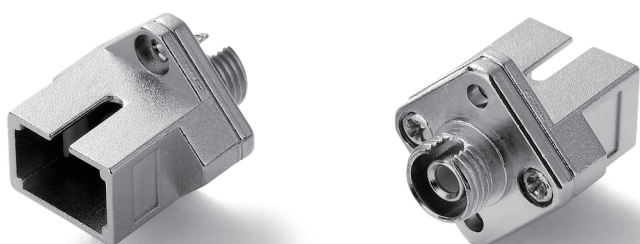
### Ordering Information

Part Number	Description
AD.FCSC.ME-S-ZR-09	Adapter SC/UPC to FC/UPC Hybrid, 9/125, Female to Female, Metal

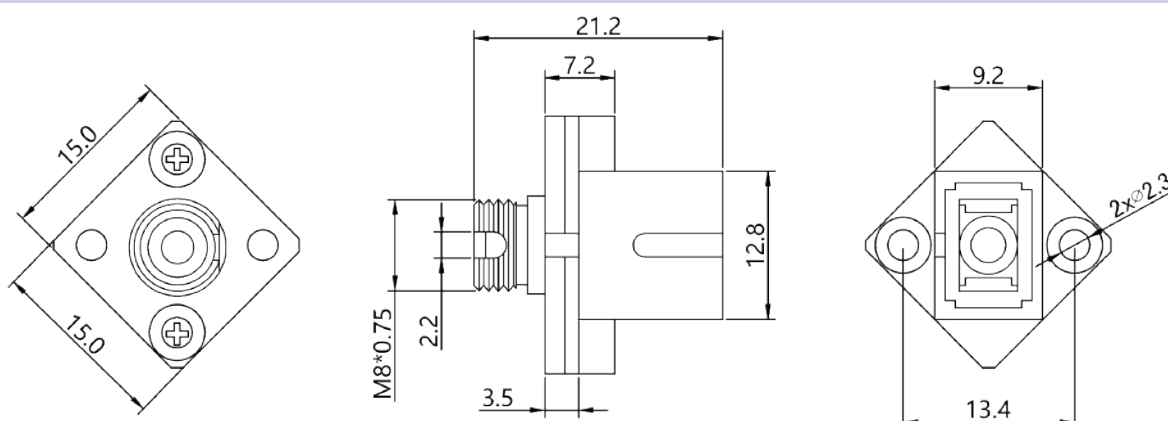
# SC-FC

## Hybrid Adapter

### SC-FC Hybrid Adapter



### DIAGRAM



### Specifications

Connector	SC, FC	Fiber Mode	9/125
Body Type	Simplex	Gender Type	Female to Female
Housing Material	Metal	Insertion Loss	≤0.2dB
Working Temperature	-25°C ~ +70°C	Durability	≥500 times

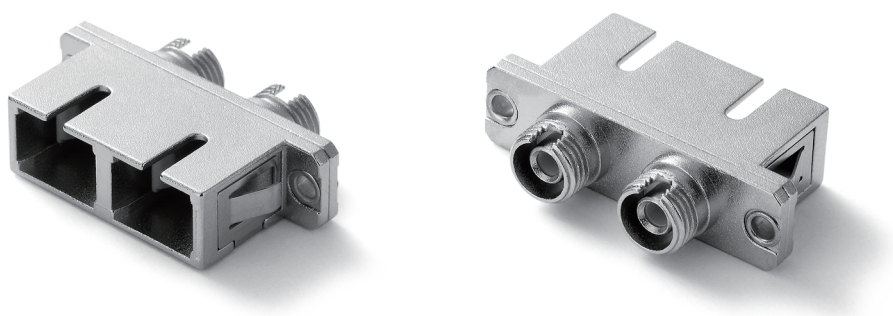
### Ordering Information

Part Number	Description
AD.FCSC.ME-S-ZR-14	Adapter SC/UPC to FC/APC Hybrid, 9/125, Female to Female, Metal

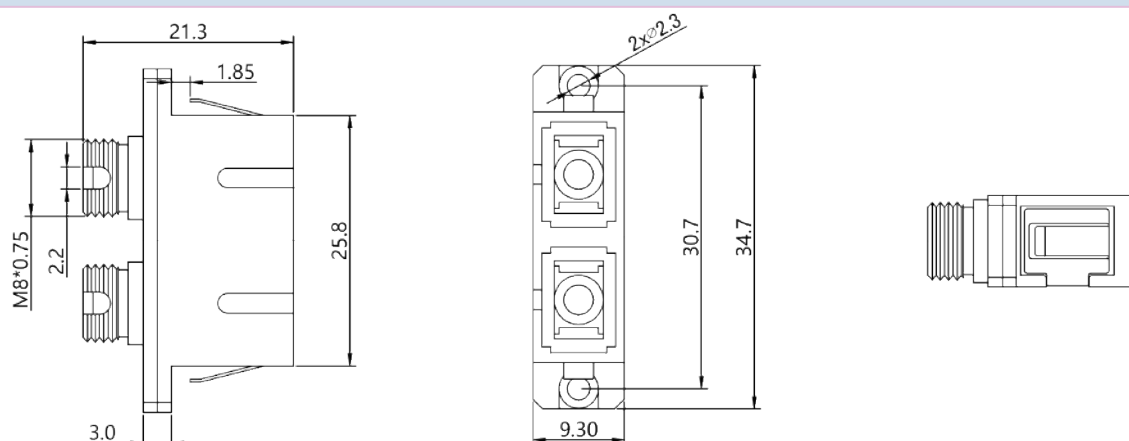
# SC-FC

## Hybrid Adapter

### SC-FC Hybrid Adapter



### DIAGRAM



### Specifications

Connector	SC, FC	Fiber Mode	9/125
Body Type	Deplex	Gender Type	Female to Female
Housing Material	Metal	Insertion Loss	≤0.2dB
Working Temperature	-25°C ~ +70°C	Durability	≥500 times

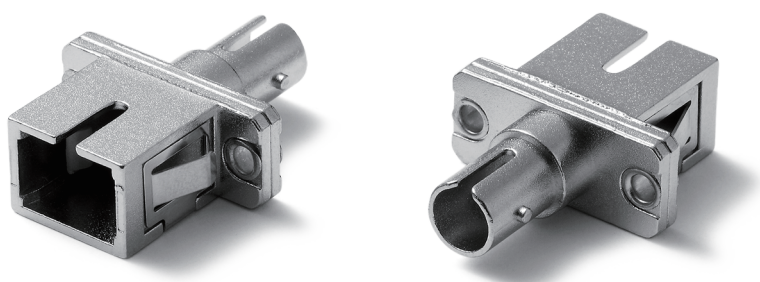
### Ordering Information

Part Number	Description
AD.FCSC.ME-D-ZR-03	Adapter SC/UPC to FC/UPC Hybrid, 9/125, Female to Female, Metal

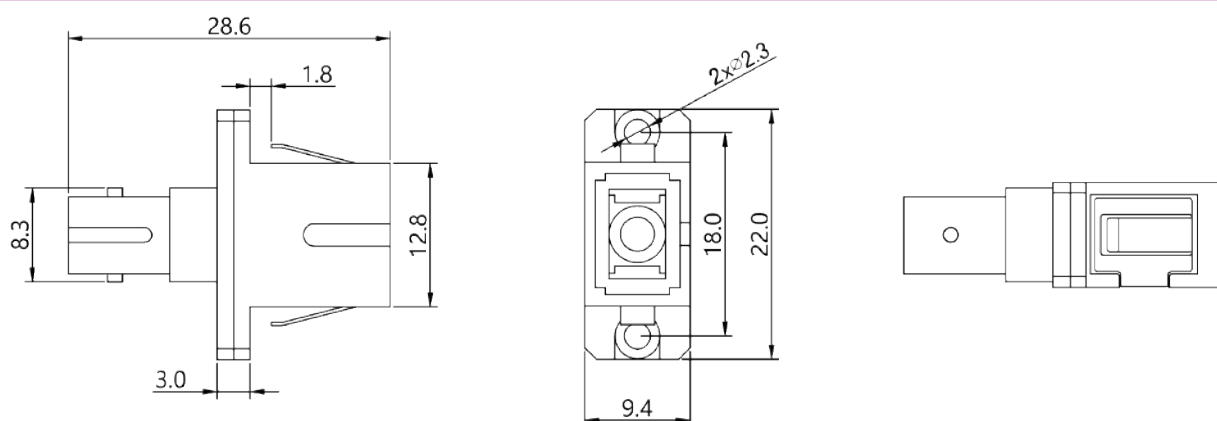
# SC-ST

## Hybrid Adapter

### SC-ST Hybrid Adapter



### DIAGRAM



### Specifications

Connector	SC, ST	Fiber Mode	9/125
Body Type	Simplex	Gender Type	Female to Female
Housing Material	Metal	Insertion Loss	≤0.2dB
Working Temperature	-25°C ~ +70°C	Durability	≥500 times

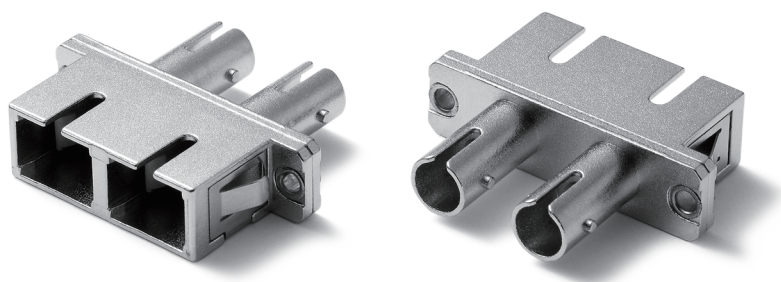
### Ordering Information

Part Number	Description
AD.SCST.ME-S-ZR-09	Adapter SC/UPC to ST/UPC Hybrid, 9/125, Female to Female, Metal

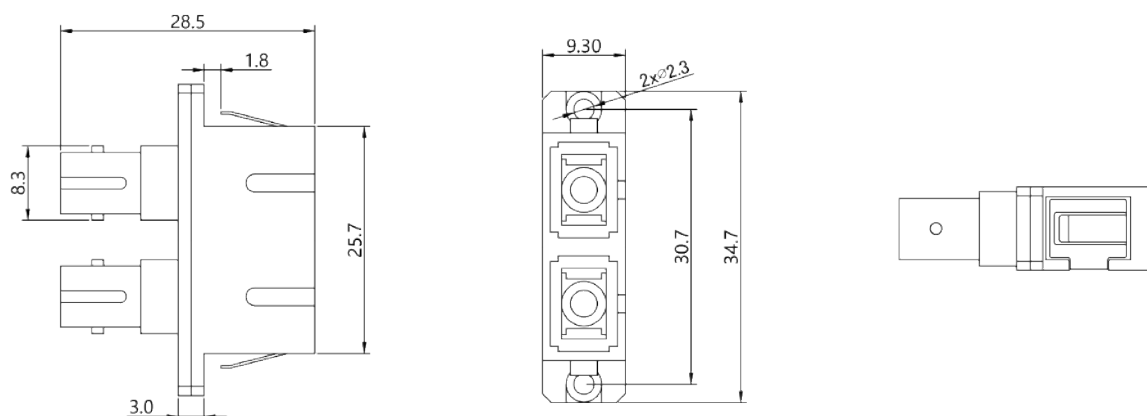
# SC-ST

## Hybrid Adapter

### SC-ST Hybrid Adapter



#### DIAGRAM



#### Specifications

Connector	SC, ST	Fiber Mode	9/125
Body Type	Deplex	Gender Type	Female to Female
Housing Material	Metal	Insertion Loss	$\leq 0.2\text{dB}$
Working Temperature	$-25^{\circ}\text{C} \sim +70^{\circ}\text{C}$	Durability	$\geq 500$ times

#### Ordering Information

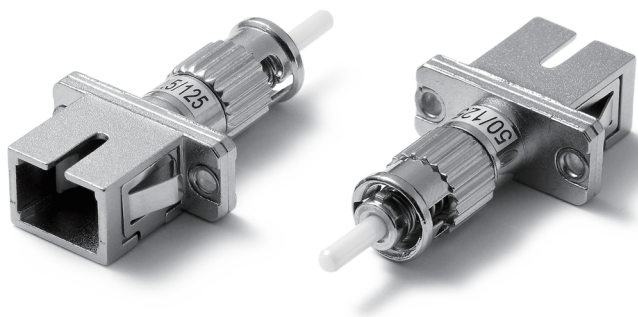
Part Number	Description
AD.SCST.ME-D-ZR-09	Adapter SC/UPC to ST/UPC Hybrid, 9/125, Female to Female, Metal



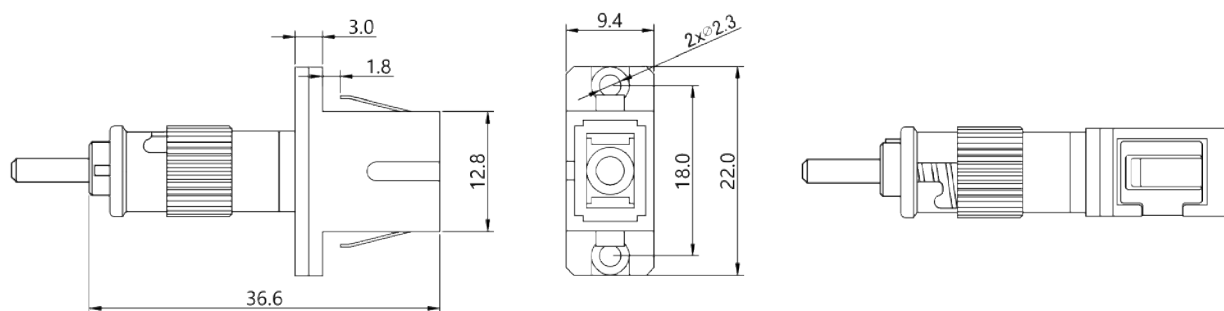
# SC-ST

## Hybrid Adapter

### SC-ST Hybrid Adapter



### DIAGRAM



### Specifications

Connector	SC, ST	Fiber Mode	62.5/125, 50/125
Body Type	Simplex	Gender Type	Female to Male
Housing Material	Metal	Insertion Loss	≤0.5dB
Working Temperature	-25°C ~ +70°C	Durability	≥500 times

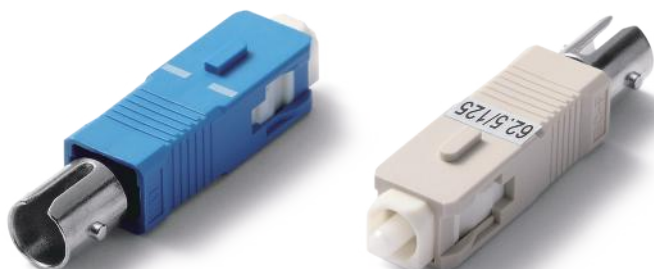
### Ordering Information

Part Number	Description
AD.SCST.BE-S-ZR-08	Adapter SC/UPC to ST/UPC Hybrid, 62.5/125, Female to Male, Metal
AD.SCST.BE-S-ZR-09	Adapter SC/UPC to ST/UPC Hybrid, 50/125, Female to Male, Metal

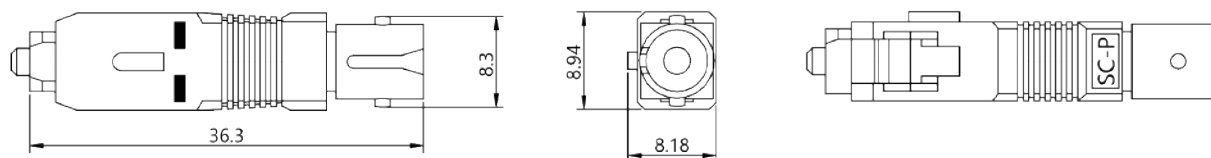
# SC-ST

## Hybrid Adapter

### SC-ST Hybrid Adapter



### DIAGRAM



### Specifications

Connector	SC, ST	Fiber Mode	9/125, 62.5/125, 50/125
Body Type	Simplex	Gender Type	Male to Female
Housing Material	Plastic, Metal	Insertion Loss	≤0.5dB
Working Temperature	-25°C ~ +70°C	Durability	≥500 times

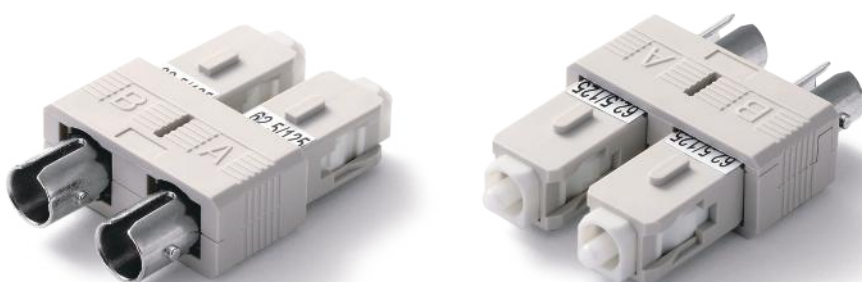
### Ordering Information

Part Number	Description
AD.SCST.BL-S-ZR-02	Adapter SC/UPC to ST/UPC Hybrid, 9/125, Male to Female, Blue & Metal
AD.SCST.BE-S-ZR-04	Adapter SC/UPC to ST/UPC Hybrid, 62.5/125, Male to Female, Beige & Metal
AD.SCST.ME-S-ZR-12	Adapter SC/UPC to ST/UPC Hybrid, 50/125, Male to Female, Beige & Metal

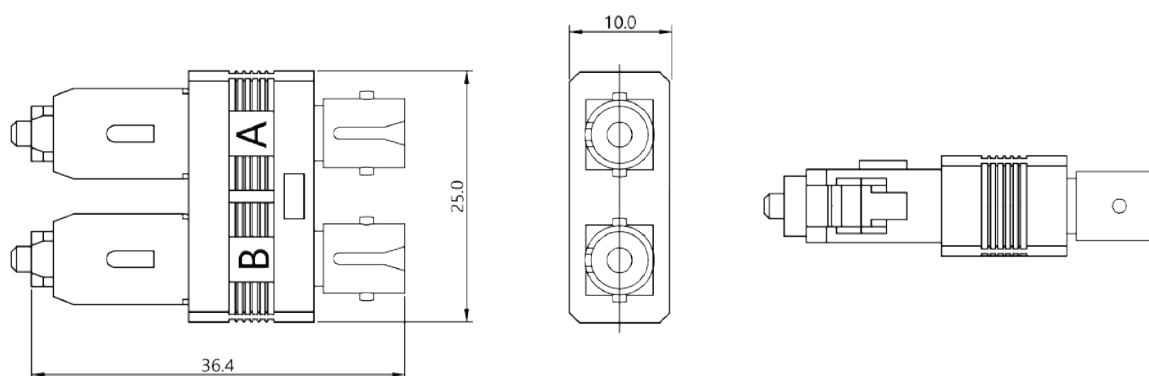
# SC-ST

## Hybrid Adapter

### SC-ST Hybrid Adapter



### DIAGRAM



### Specifications

Connector	SC, ST	Fiber Mode	62.5/125
Body Type	Deplex	Gender Type	Male to Female
Housing Material	Plastic, Metal	Insertion Loss	≤0.5dB
Working Temperature	-25°C ~ +70°C	Durability	≥500 times

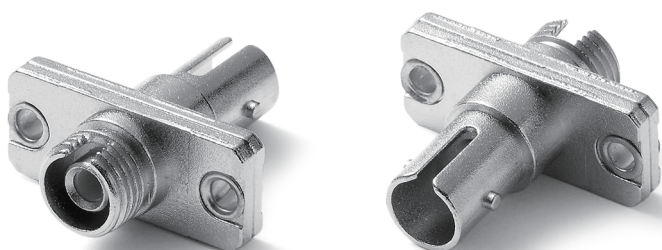
### Ordering Information

Part Number	Description
AD.SCST.ME-D-ZR-08	Adapter SC/UPC to ST/UPC Hybrid, 62.5/125, Male to Female, Beige & Metal

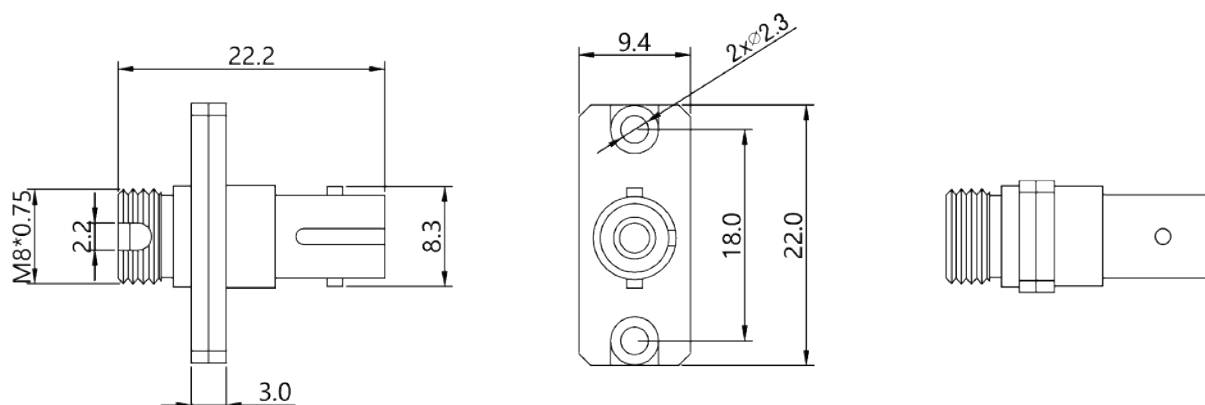
# FC-ST

## Hybrid Adapter

### FC-ST Hybrid Adapter



### DIAGRAM



### Specifications

Connector	FC, ST	Fiber Mode	9/125
Body Type	Simplex	Gender Type	Female to Female
Housing Material	Metal	Insertion Loss	≤0.2dB
Working Temperature	-25°C ~ +70°C	Durability	≥500 times

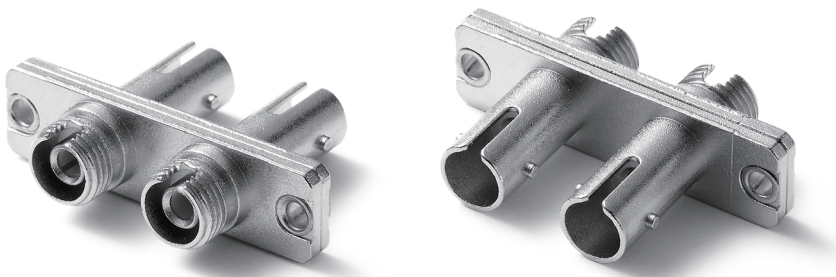
### Ordering Information

Part Number	Description
AD.FCST.ME-S-ZR-12	Adapter FC/UPC to ST/UPC Hybrid, 9/125, Female to Female, Metal

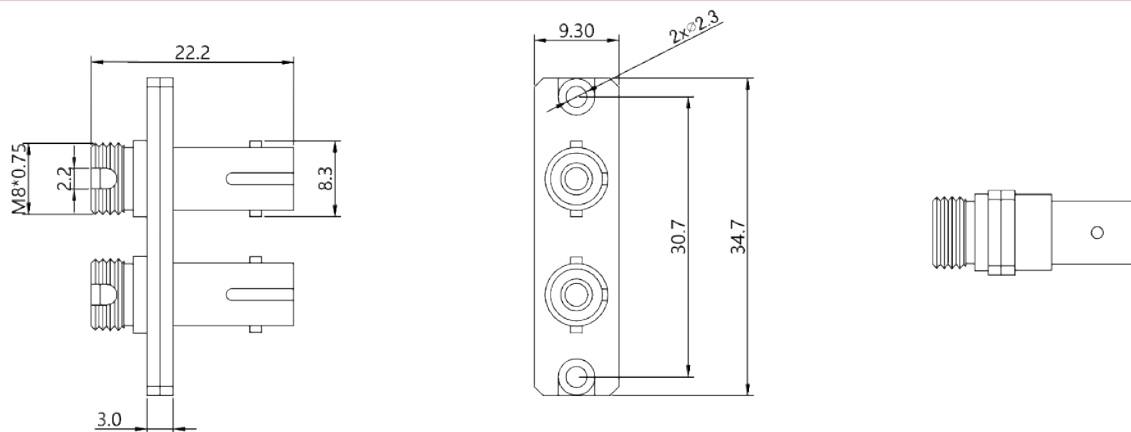
# FC-ST

## Hybrid Adapter

### FC-ST Hybrid Adapter



#### DIAGRAM



#### Specifications

Connector	FC, ST	Fiber Mode	9/125
Body Type	Deplex	Gender Type	Female to Female
Housing Material	Metal	Insertion Loss	≤0.2dB
Working Temperature	-25°C ~ +70°C	Durability	≥500 times

#### Ordering Information

Part Number	Description
AD.FCST.ME-D-ZR-11	Adapter FC/UPC to ST/UPC Hybrid, 9/125, Female to Female, Metal

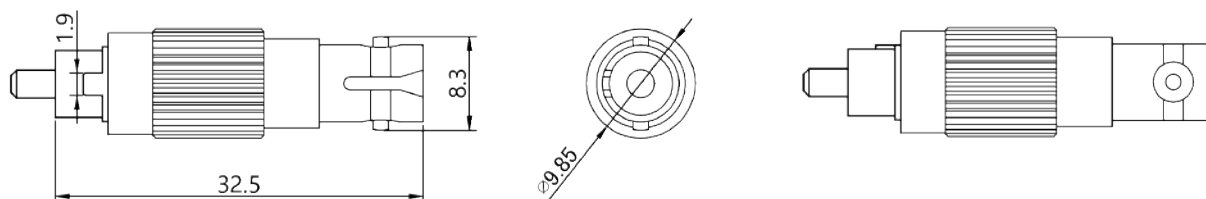
# FC-ST

## Hybrid Adapter

### FC-ST Hybrid Adapter



### DIAGRAM



### Specifications

Connector	FC, ST	Fiber Mode	9/125, 62.5/125, 50/125
Body Type	Simplex	Gender Type	Male to Female
Housing Material	Metal	Insertion Loss	≤0.5dB
Working Temperature	-25°C ~ +70°C	Durability	≥500 times

### Ordering Information

Part Number	Description
AD.FCST.ME-S-ZR-16	Adapter FC/UPC to ST/UPC Hybrid, 9/125, Male to Female, Metal
AD.FCST.ME-S-ZR-17	Adapter FC/UPC to ST/UPC Hybrid, 62.5/125, Male to Female, Metal
AD.FCST.ME-S-ZR-18	Adapter FC/UPC to ST/UPC Hybrid, 50/125, Male to Female, Metal

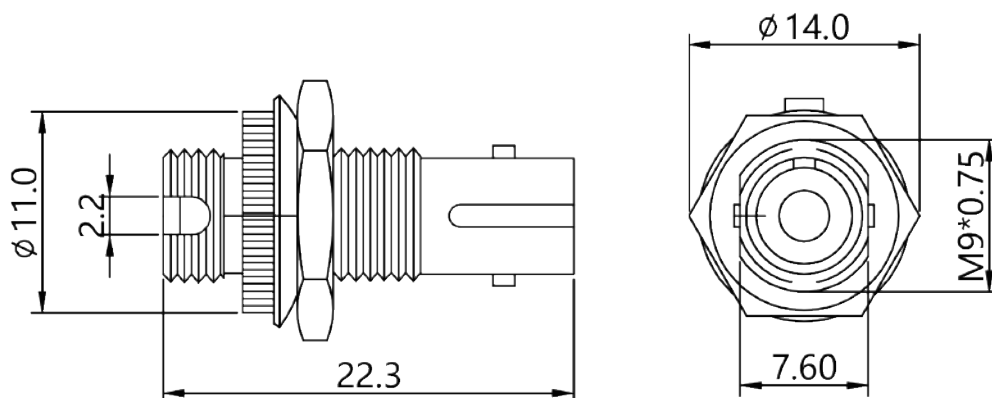
# FC-ST

## Hybrid Adapter

### FC-ST Hybrid Adapter



#### DIAGRAM



#### Specifications

Connector	FC, ST	Fiber Mode	9/125
Body Type	Simplex	Gender Type	Female to Female
Housing Material	Metal	Insertion Loss	$\leq 0.2\text{dB}$
Working Temperature	$-25^{\circ}\text{C} \sim +70^{\circ}\text{C}$	Durability	$\geq 500$ times

#### Ordering Information

Part Number	Description
AD.FCST.ME-S-ZR-11	Adapter FC/UPC to ST/UPC Hybrid, 9/125, Female to Female, Metal

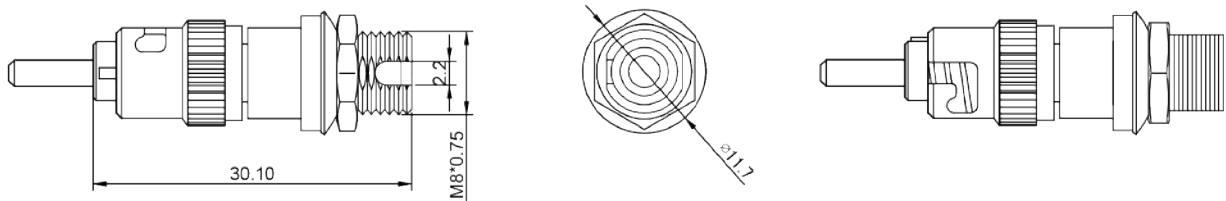
# FC-ST

## Hybrid Adapter

### FC-ST Hybrid Adapter



### DIAGRAM



### Specifications

Connector	FC, ST	Fiber Mode	50/125
Body Type	Simplex	Gender Type	Female to Male
Housing Material	Metal	Insertion Loss	≤0.5dB
Working Temperature	-25°C ~ +70°C	Durability	≥500 times

### Ordering Information

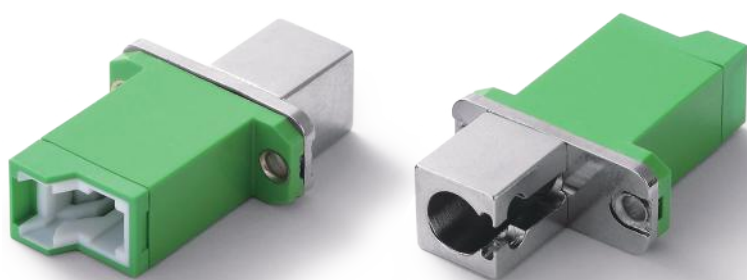
Part Number	Description
AD.FCST.ME-S-ZR-05	Adapter FC/UPC to ST/UPC Hybrid, 50/125, Female to Male, Metal



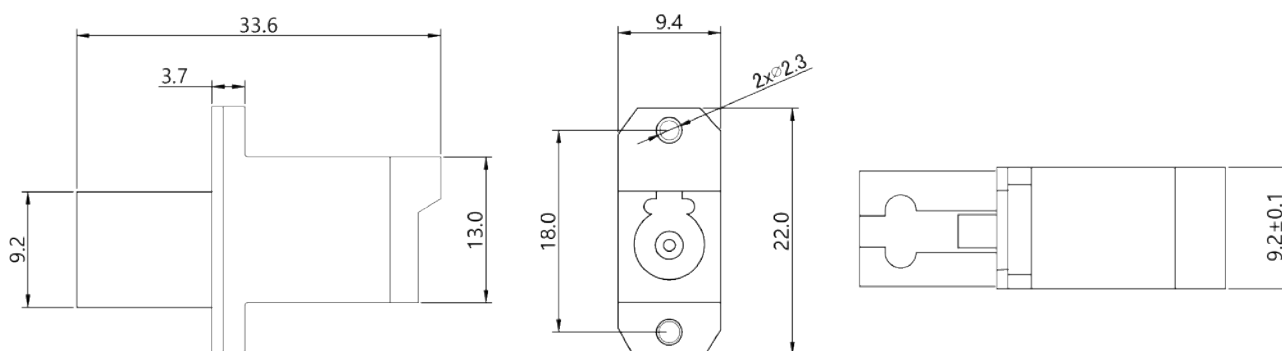
# LC-E2000

## Hybrid Adapter

### LC-E2000 Hybrid Adapter



### DIAGRAM



### Specifications

Connector	LC, E2000	Fiber Mode	9/125
Body Type	Simplex	Gender Type	Female to Female
Housing Material	Plastic, Metal	Insertion Loss	$\leq 0.5\text{dB}$
Working Temperature	$-25^{\circ}\text{C} \sim +70^{\circ}\text{C}$	Durability	$\geq 500$ times

### Ordering Information

Part Number	Description
AD.E2LC.GR-S-ZR-00	Adapter LC/APC to E2000/APC Hybrid, 9/125, Female to Female, Green & Metal

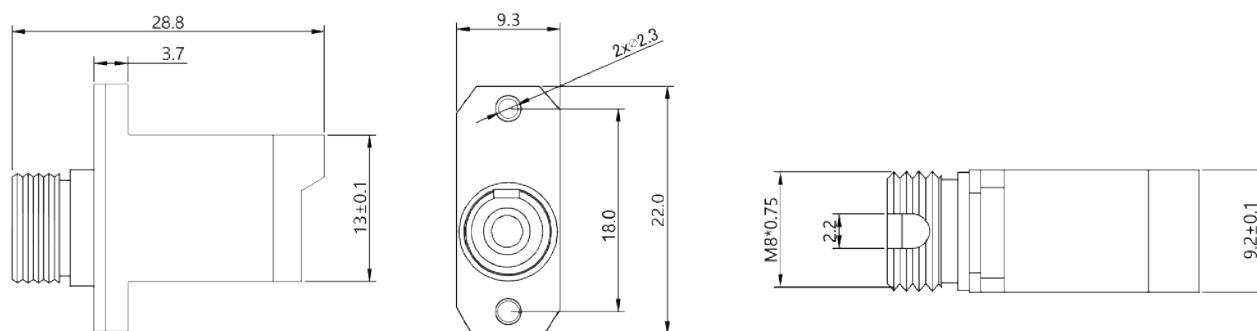
# FC-E2000

## Hybrid Adapter

### FC-E2000 Hybrid Adapter



### DIAGRAM



### Specifications

Connector	FC, E2000	Fiber Mode	9/125
Body Type	Simplex	Gender Type	Female to Female
Housing Material	Plastic, Metal	Insertion Loss	$\leq 0.2\text{dB}$
Working Temperature	$-25^{\circ}\text{C} \sim +70^{\circ}\text{C}$	Durability	$\geq 500$ times

### Ordering Information

Part Number	Description
AD.E2FC.BL-S-ZR-00	Adapter FC/UPC to E2000/UPC Hybrid, 9/125, Female to Female, Blue & Metal

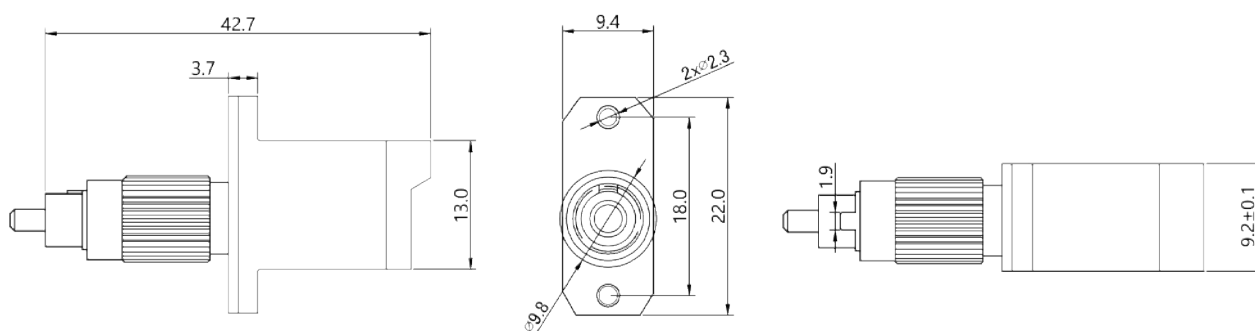
# FC-E2000

## Hybrid Adapter

### FC-E2000 Hybrid Adapter



### DIAGRAM



### Specifications

Connector	FC, E2000	Fiber Mode	9/125
Body Type	Simplex	Gender Type	Male to Female
Housing Material	Plastic, Metal	Insertion Loss	≤0.5dB
Working Temperature	-25°C ~ +70°C	Durability	≥500 times

### Ordering Information

Part Number	Description
AD.E2FC.GR-S-ZR-00	Adapter FC/APC to E2000/APC Hybrid, 9/125, Male to Female, Green & Metal